

Checkpoint

Exam 156-215.77

Check Point Certified Security Administrator

Version: Demo

[Total Questions: 10]

Topic break down

Topic	No. of Questions
Topic 3: Volume C	4
Topic 4: Volume D	6

Topic 3, Volume C

Question No : 1 - (Topic 3)

What is the syntax for uninstalling a package using newpkg?

- A. -u <pathname of package>
- B. -i <full pathname of package>
- C. -S <pathname of package>
- D. newpkg CANNOT be used to uninstall a package

Answer: D

Question No : 2 - (Topic 3)

You are the Security Administrator for MegaCorp. A Check Point firewall is installed and in use on a platform using GAIa. You have trouble configuring the speed and duplex settings of your Ethernet interfaces. Which of the following commands can be used in CLISH to configure the speed and duplex settings of an Ethernet interface and will survive a reboot? Give the BEST answer.

- A. ethtool
- B. set interface <options>
- C. mii_tool
- D. ifconfig -a

Answer: B

Question No : 3 - (Topic 3)

ALL of the following options are provided by the GAIa sysconfig utility, EXCEPT:

- A. Export setup
- B. DHCP Server configuration
- C. Time & Date
- D. GUI Clients

Answer: D

Question No : 4 - (Topic 3)

Where does the security administrator activate Identity Awareness within SmartDashboard?

- A. Gateway Object > General Properties
- B. Security Management Server > Identity Awareness
- C. Policy > Global Properties > Identity Awareness
- D. LDAP Server Object > General Properties

Answer: A

Topic 4, Volume D

Question No : 5 - (Topic 4)

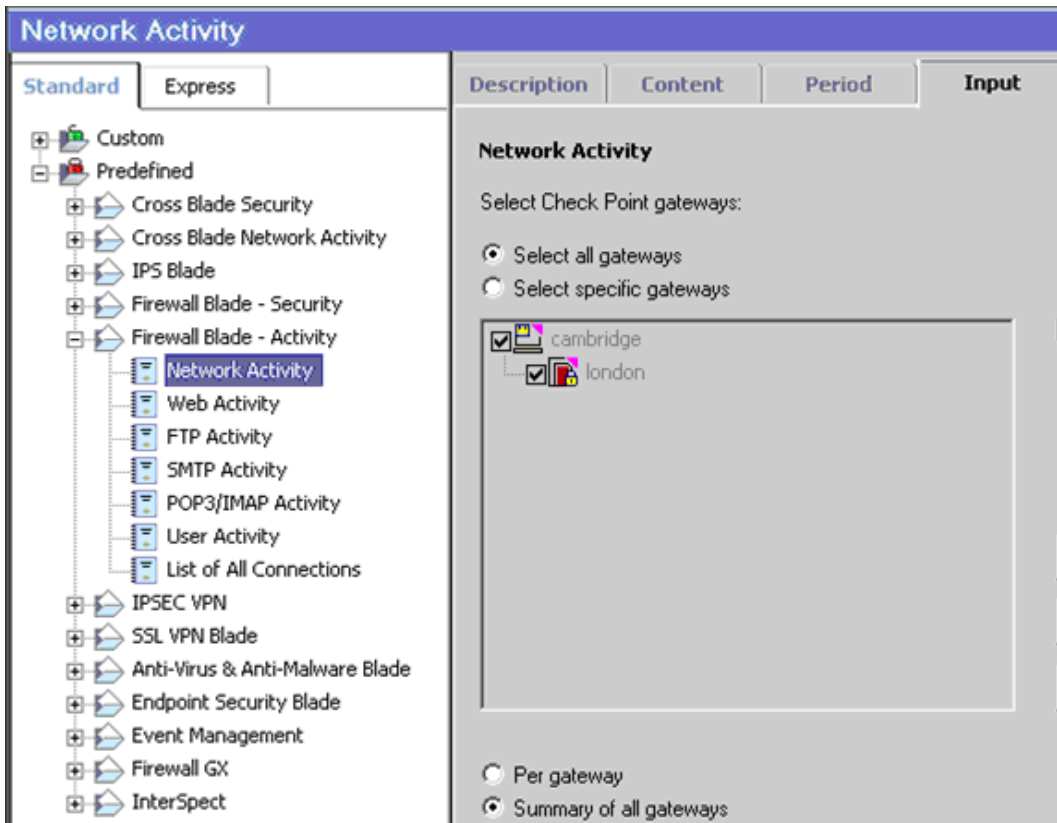
Lily has completed the initial setup of her Management Server with an IP address of 192.168.12.12. She must now run the First Time Configuration Wizard via the Gaia Portal to finish the setup. Lily knows she must use a browser to access the device, but it unsure of the correct URL to enter; which one below will she need to use?

- A. http://192.168.12.12
- B. https://192.168.12.12:4433
- C. https://192.168.12.12
- D. http://192.168.12.12:8080

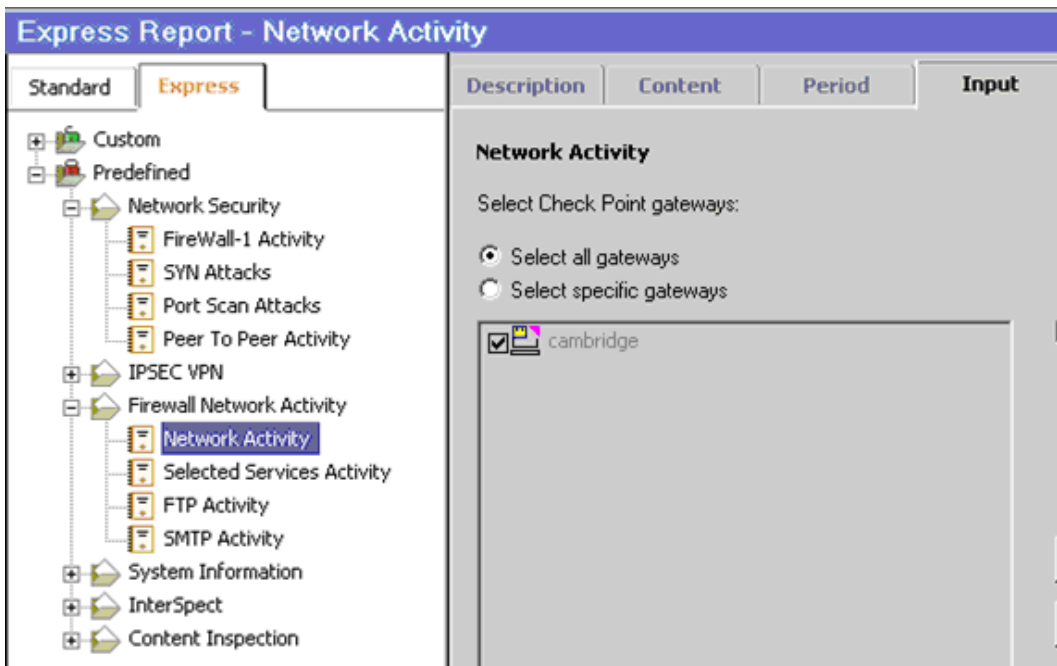
Answer: C

Question No : 6 - (Topic 4)

You are the Security Administrator for MegaCorp and would like to view network activity using SmartReporter. You select a standard predefined report. As you can see here, you can select the london Gateway.



When you attempt to configure the Express Report, you are unable to select this Gateway.



What is the reason for this behavior? Give the BEST answer.

- A. You must enable the Eventia Express Mode on the london Gateway.
- B. You have the license for Eventia Reporter in Standard mode only.
- C. You must enable the Express Mode inside Eventia Reporter.
- D. You must enable Monitoring in the london Gateway object's General Properties.

Answer: D

Question No : 7 - (Topic 4)

Which NAT option is available for Manual NAT as well as Automatic NAT?

- A. Allow bi-directional NAT
- B. Automatic ARP configuration
- C. Translate destination on client-side
- D. Enable IP Pool NAT

Answer: C

Question No : 8 - (Topic 4)

Your company enforces a strict change control policy. Which of the following would be MOST effective for quickly dropping an attacker's specific active connection?

- A. Change the Rule Base and install the Policy to all Security Gateways
- B. Block Intruder feature of SmartView Tracker
- C. Intrusion Detection System (IDS) Policy install
- D. SAM - Suspicious Activity Rules feature of SmartView Monitor

Answer: B

Question No : 9 - (Topic 4)

How are locally cached usernames and passwords cleared from the memory of a R77 Security Gateway?

- A. By using the Clear User Cache button in SmartDashboard.
- B. Usernames and passwords only clear from memory after they time out.
- C. By retrieving LDAP user information using the command fw fetchldap.
- D. By installing a Security Policy.

Answer: D

Question No : 10 - (Topic 4)

Which R77 GUI would you use to see the number of packets accepted since the last policy install?

- A. SmartView Monitor
- B. SmartView Tracker
- C. SmartDashboard
- D. SmartView Status

Answer: A