

Citrix

Exam 1Y0-201

Managing Citrix XenDesktop 7.6 Solutions

Version: Demo

[Total Questions: 10]

Topic break down

Topic	No. of Questions
Topic 1: Managing a Citrix XenDesktop 7.6 Solution	3
Topic 2: Maintaining a Citrix XenDesktop 7.6 Solution	2
Topic 3: Monitoring a Citrix XenDesktop 7.6 Solution	2
Topic 4: Troubleshooting a Citrix XenDesktop 7.6 Solution	2
Topic 5: Simulation Questions	1

Topic 1, Managing a Citrix XenDesktop 7.6 Solution

Question No : 1 - (Topic 1)

Scenario: A Citrix Administrator has deployed 2000 Desktop OS machines in a call center environment. The call center is segmented into three shifts that span the full 24-hour day. The Desktop OS machines are deployed as non-persistent Desktop OS machines with Provisioning Services. The administrator needs to increase the RAM allocated to each Desktop OS machine by 1 GB.

What should the administrator do to add the memory to each Desktop OS machine in this environment?

- A. Increase the memory of the Master Target Device inside the Provisioning Services Console.
- B. Use PowerShell cmdlets on the Delivery Controller to set the Desktop OS machine settings for a specific Machine Catalog.
- C. Update the template in the hosting infrastructure. In Citrix Studio, select the Machine Catalogs node, select the machine catalog in the results pane, and click Update Machine.
- D. Create new virtual machines with the XenDesktop Setup Wizard using the updated hosting template. Once all Delivery Groups have been migrated to the new catalog, delete the existing Desktop OS machines.

Answer: D

Question No : 2 - (Topic 1)

What will continue to function while a XenDesktop site database is offline?

- A. Citrix Studio
- B. Citrix Director
- C. Anonymous Connections
- D. Existing user connections to Desktop OS machines

Answer: D

Question No : 3 - (Topic 1)

What is true about users' access to Desktop OS machines when the XenDesktop SQL

Server is offline?

- A. New users may start sessions.
- B. Only anonymous users may start new sessions.
- C. Users may only start a new session to Desktop OS machines.
- D. Users who have connected to their Desktop OS machine in the last 14 days are able to start sessions.

Answer: D

Topic 2, Maintaining a Citrix XenDesktop 7.6 Solution

Question No : 4 - (Topic 2)

Scenario: Users report slow application launch times after a master image update. These users have critical deadlines and need access to their machines as soon as possible.

How should a Citrix Administrator resolve the slow application launch times?

- A. Revert to the previous image.
- B. Reset user profiles using Citrix Director.
- C. Restart the impacted Desktop OS machines.
- D. Migrate the Desktop OS machines to a different host.

Answer: D

Question No : 5 - (Topic 2)

Scenario: A Citrix Administrator uses Machine Creation Services to provision Desktop OS machines in an environment. The administrator needs to update an application that is locally installed on the Desktop OS machines.

Which action should the administrator take after updating the application to ensure that users are provided with the updated application?

- A. Update the master image, then update the Delivery Group.
- B. Update the session machine catalog, then update the Delivery Group.
- C. Update the master image, then update the appropriate session machine catalog.
- D. Update the Desktop OS machines, then update the appropriate session machine catalog.

Answer: C

Reference: <http://docs.citrix.com/en-us/xenapp-and-xendesktop/7-6/xad-build-new-environment/xad-mach-cat-intro/xad-mach-cat-manage.html>

Topic 3, Monitoring a Citrix XenDesktop 7.6 Solution

Question No : 6 - (Topic 3)

Scenario: Users in an environment access hosted applications from thin clients connected to overhead projectors. Some of these users have complained about delays and interruptions in the video playing when viewing videos that require Adobe Flash player.

Where could a Citrix Administrator gather information to resolve this issue?

- A. Logging node in Citrix Studio
- B. Session Detail in Citrix Director
- C. Activity Manager in Citrix Director
- D. Event logs on the Delivery Controller

Answer: B

Question No : 7 - (Topic 3)

Scenario: A Citrix Administrator manages a XenDesktop site for a Call Center consisting of 2000 Desktop OS machines. Many users are unable to log on to the Desktop OS machines. The administrator suspects there is an issue with the Desktop OS machines that is impacting the user's ability to log on.

Where should the administrator look to gather information about this issue?

- A. HDX Insight in Citrix Director
- B. Logging node of Citrix Studio
- C. Citrix Director on the Failed Desktop OS machines node
- D. The Provisioning Services Console on the Device Collection node

Answer: C

Topic 4, Troubleshooting a Citrix XenDesktop 7.6 Solution

Question No : 8 - (Topic 4)

In which node within Citrix Studio could a Citrix Administrator modify the operating system type for Machine Creation Services?

- A. Hosting
- B. Policies
- C. Controllers
- D. Machine Catalogs

Answer: D

Reference: https://www.citrix.com/content/dam/citrix/en_us/documents/go/citrix-xenapp-and-xendesktop-76-implementation-guide-for-healthcare.pdf

Question No : 9 - (Topic 4)

Scenario: Only users with Desktop OS machines accessed with pass-through authentication are receiving the following error message when they try to launch hosted applications:

'Unable to launch as the application is not currently available.'

How could a Citrix Administrator resolve this issue?

- A. Using a Citrix policy
- B. Through a registry setting
- C. Using a PowerShell cmdlet
- D. Through the Delivery Group setting

Answer: C

Topic 5, Simulation Questions

Question No : 10 CORRECT TEXT - (Topic 5)

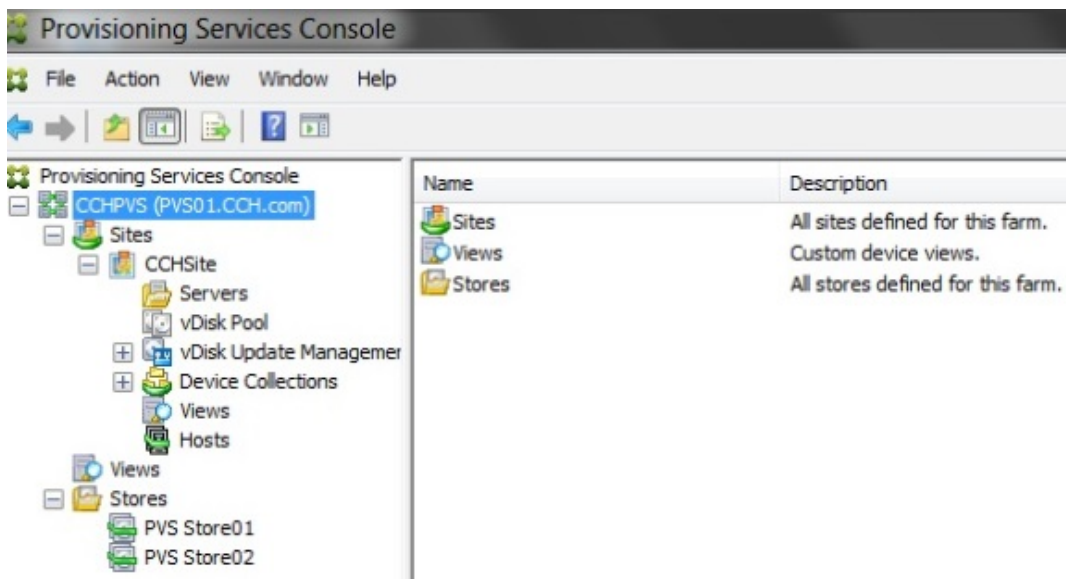
Scenario: Members of the HR user group at CCH need access to desktops running Windows 8. The desktops provided to HR users must be in a separate device collection named HR. As part of a pilot, a Citrix Administrator must use the Provisioning Services Console to create the device collection and initially four target devices with plans to add 20 more. The target devices named Win801T Win802. Win803 and Win804 should be assigned the CCH_Win8 vDisk and those devices should be assigned to the HR OU. XenDesktop is NOT being used for the HR team at the moment.

The hypervisor information for the environment is:

- ✎ XenServer IP Address: 192.168.10.5
- ✎ Username: root
- ✎ Password: Password 1

Tasks:

1. Create a device collection named HR.
2. Create four target devices named Win801, Win802. Win803 and Win804, and add the target devices to the HR device collection.
3. Ensure the target devices are configured to meet the requirements outlined in the scenario.



Answer: Review the steps and solution in explanation below.

Explanation:

- 1) In Provisioning Services Console, right click on “Device” and click on **Create Device Collection**.
- 2) In the “General” type in the name “**HR**” and click on **OK**.

- 3) Right click on “CCHSite” node and select **Streamed Virtual Machine Setup**.
- 4) From the “Hypervisor connection” dialog window type in the Hypervisor IP address, username and password provided then click on **Next**.
- 5) From the “Virtual machine template” dialog window select the correct virtual machine template then click on **Next**.
- 6) From the “vDisk” dialog window select CCH_Win8 then click on **Next**.
- 7) From the “Collection” dialog window select **HR** from the drop-down window then click on **Next**.
- 8) From the “Virtual Machines” dialog window, increase the “Number of virtual machines to create” to **4** then click on **Next**.
- 9) From the “Active Directory” dialog window verify “Create new accounts” is selected then click on **Next**.
- 10) From the “Active Directory accounts and location” dialog windows select the **HR OU**; in the “Account naming scheme” field type in the “Basename#” of **Win8##**, select **0-9** from the drop down to the right, then click on **Next**.
- 11) From the “Summary” dialog windows click on **Finish**.
- 12) When the devices are finished creating click on **Done**.
- 13) You can verify the new devices were created correctly in the HR Device Collection you created initially.