

Oracle

Exam 1z0-151

**Oracle Fusion Middleware 11g: Build Applications with Oracle
Forms**

Verson: Demo

[Total Questions: 10]

Question No : 1

You have coded the following When Button Pressed trigger:

```
EXECUTE_QUERY;
```

```
MESSAGE ('Query executed on block');
```

```
MESSAGE ('click next to navigate the next record');
```

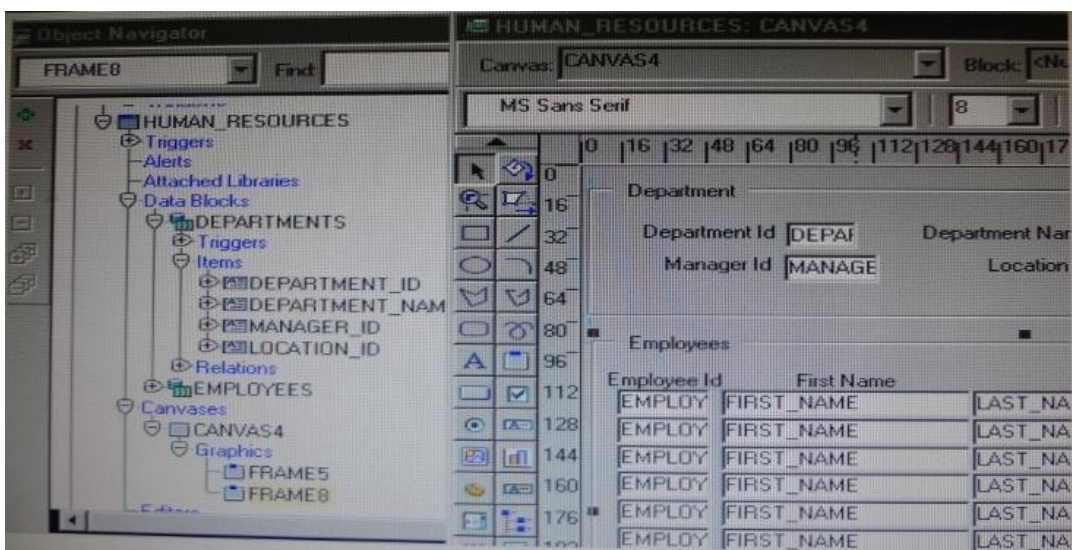
When the user clicks the button, how is the message "Query executed on block" displayed?

- A. as a system message on the status line
- B. as a system message in a system alert
- C. as a system message in an application alert
- D. as an application message on the status line
- E. as an application message in a system alert
- F. as an application message in an application alert

Answer: E

Question No : 2

View the Exhibit.



In the Human Resources form shown in the Exhibit, you want to modify the prompts,

heights, and widths of the Department Id, Manager Id, and Location Id Holds in the Departments data block.

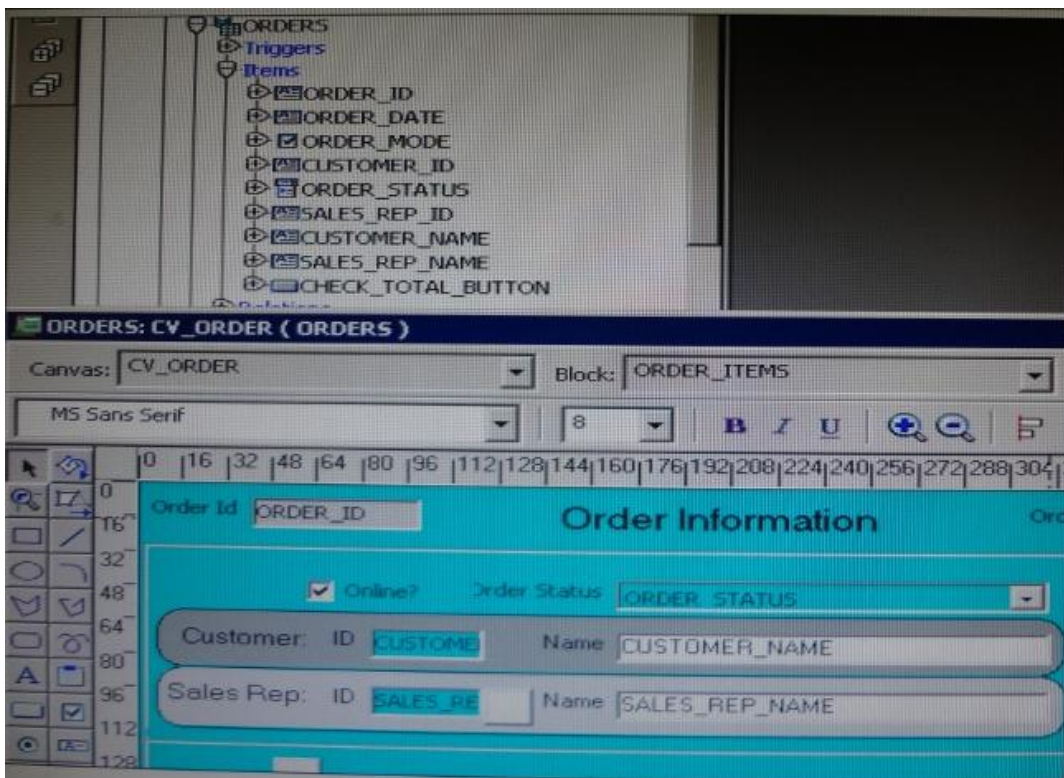
What must you select before invoking the Layout Wizard in reentrant mode to modify these item properties?

- A. Frame5
- B. Frames
- C. Canvas4
- D. the Departments block
- E. the DEPARTMENT_ID, MANAGER_ID and LOCATION_ID items

Answer: A

Question No : 3

View the Exhibit.



The Departments table in the database contains four columns. In a new form, you use the Data Block Wizard to add all columns to the block, but in the layout Wizard, you choose all columns except Location_Id to add to the canvas. The Object Navigator and layout Editor appear as shown in the Exhibit.

You then decide that you do need to display Location_Id on the canvas. What object must you select before invoking the Layout Editor in re-entrant mode to make this change?

- A. the text item tool in the Layout Editor
- B. Frame 16 in either the Object Navigator or the layout Editor
- C. Canvas4 in either the Object Navigator or the Layout Editor
- D. Location_Id in the Object Navigator
- E. the Departments data block in the Object Navigator

Answer: D

Question No : 4

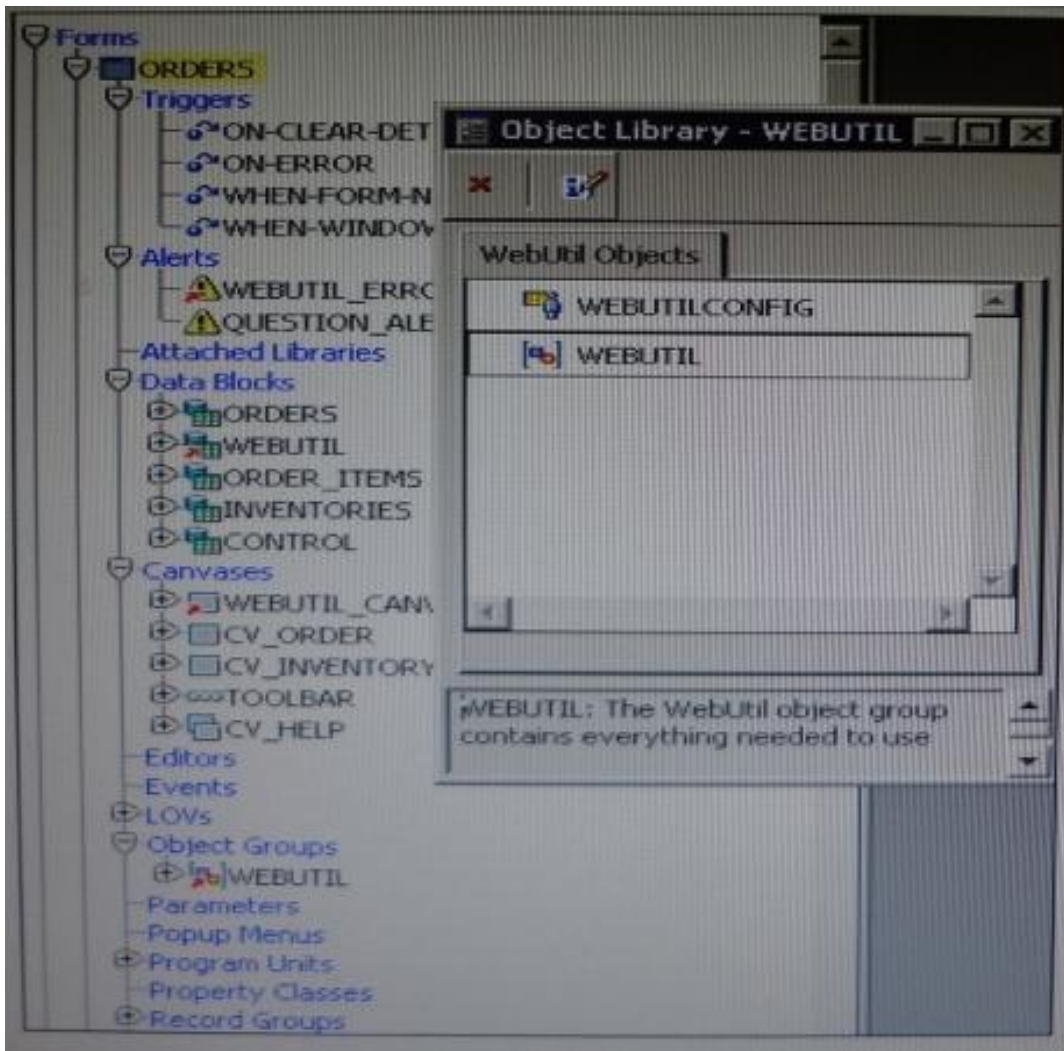
You put some code in a Post_Update trigger and raise the FORM_TRIGGER_FAILURE under certain conditions. Does a rollback take place if the trigger fails?

- A. Yes. Although the update has been applied to the database, the old column values are retained as rollback data; so a failure of this trigger automatically reinstates the original values.
- B. No. It is too late to perform a rollback at this stage because the update has already been applied.
- C. The value have already been applied, so you must programmatically save the old values in the global variables or PL/SQL variables if you want to reinstall the original values.

Answer: A

Question No : 5

View the Exhibit.



You have begun the process of integrating WebUtil into the Ordes form. What two additional steps must be completed yet?

- A. Write a Pre Form trigger to register WebUtil JavaBeans.
- B. Attach the WebUtil PL/SQL library to the form.
- C. Subclass the webUtilConfig parameter from the WebUtil object library into the form.
- D. Define WebUtil events that the form listens and responds to.
- E. Move the WebUtil data block to the last position under the Data Blocks node in the Object Navigator.
- F. Move the WebUtil data block to the first position under the Data Blocks node in the Object Navigator.

Answer: B,E

Explanation: Integrating WebUtil into a Form

Step 1: Attaching the WebUtil Library (This has already been done in this scenario – not B)
 To use the functions of WebUtil in a Forms application, you must first attach the webutil.pll library to any module that will use the WebUtil PL/SQL API. Select the Attached Libraries node in the Orders form and click Create. This invokes the Attach Library dialog

box, in which you can browse to the location of webutil.pll

Step 2: Subclassing WebUtil Forms Objects (C)

Part of the WebUtil utility is a set of Forms objects contained in webutil.olb

This object library contains an object group called WebUtil, which you can subclass into your form.

E: A data block named WEBUTIL; ensure that this is the last block in the Navigator.

Reference: Oracle Fusion Middleware 11g, Build Applications with Oracle Forms, Integrating WebUtil into a Form

Question No : 6

You have a text item in your form named Object1. You want to create Object2 as an exact duplicate of Object1. You want to be able to change the properties of Object2. However if you change Object1, you do not want Object2 to change.

Which method of reusing Object1 would be best for these requirements?

- A. Copying Object1
- B. Subclassing Object1
- C. Creating a property class from Object1
- D. Putting Object1 in an Object library
- E. Referencing Object1 in a PL/SQL library

Answer: A

Question No : 7

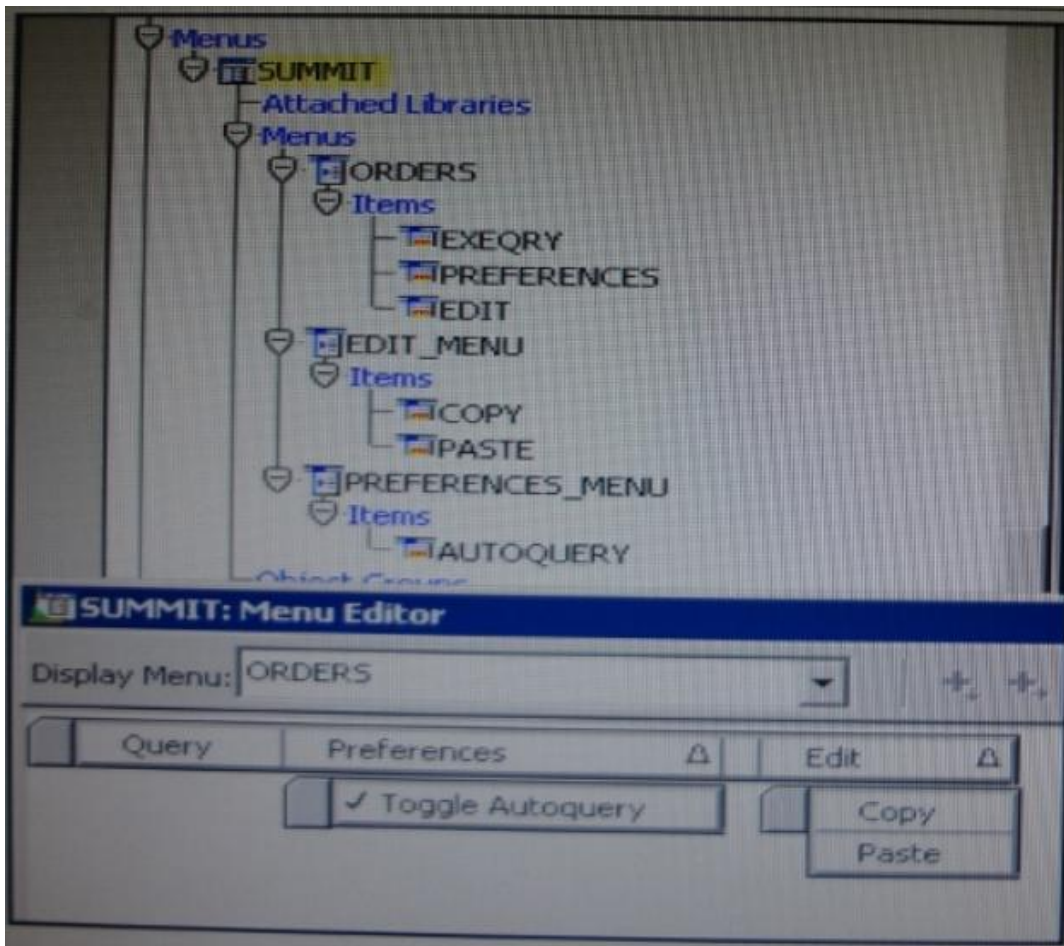
The Enforce Primary Key property of a data block ensures that the primary key of a new record exists in the database.

- A. True
- B. False

Answer: B

Question No : 8

View the Exhibit.



The Summit menu is attached to the Orders form. The Toggle Autoquery menu item is a check box that toggles whether a query is automatically performed when the Orders form is first invoked. If the check box is deselected, users must manually query.

In addition to using the menu, users want to be able to toggle the autoquery preference directly from the form. You add a button named Toggle Autoquery with the following When-Button-Pressed trigger:

```
DECLARE
```

```
mi_id MENUITEMS;
```

```
BEGIN

mi_id :=FIND_ITEM ('Preferences.AutoQuery')

/* Determine the current checked static of the AutoCommit menu checkbox item
And toggle the checked state*/

IF GET_ITEM_PROPERTY (mi_id, CHECKED) = 'TRUE' THEN

SET_ITEM_PROPERTY (mi_id, CHECKED, PROPERTY_FALSE);

ELSE

SET_ITEM_PROPERTY (mi_id, CHECKED, PROPERTY_TRUE);

END IF;

END;
```

However, the trigger does not compile. What three changes must you make so that the trigger compiles successfully?

- A. Change FIND_ITEM to FIND_MENU_ITEM.
- B. Change 'preferences.AutoQuery' to 'orders.preferences.AutoQuery'.
- C. Change 'preferences.AutoQuery' to 'AutoQuery'.
- D. Change 'preferences.AutoQuery' to 'ORDERS.PREFERENCES>AUTOQUERY'.
- E. Change 'preferences.AutoQuery' to 'AUTOQUERY'.
- F. Change GET_ITEM_PROPERTY to GET_MENU_ITEM_PROPERTY
- G. Change SET_ITEM_PROPERTY to SET_MENU_ITEM_PROPERTY
- H. Change PROPERTY_FALSE to 'FALSE'.
- I. Change PROPERTY_TRUE to 'TRUE'.

Answer: A,F,G

Explanation: A: Note: FIND_MENU_ITEM built-in

Description

Searches the list of menu items and returns a menu item ID when it finds a valid menu item with the given name. You must define an appropriately typed variable to accept the return value. Define the variable with a type of MenuItem.

Note 2:

FIND_ITEM built-in

Description

Searches the list of items in a given block and returns an item ID when it finds a valid item with the given

name. You must define an appropriately typed variable to accept the return value. Define the variable with a type of Item.

Example (with FIND_MENU_ITEM, GET_MENU_ITEM_PROPERTY, SET_MENU_ITEM_PROPERTY)

FIND_MENU_ITEM examples

```
/*
```

```
** Built-in: FIND_MENU_ITEM
```

```
** Example: Find the id of a menu item before setting
```

```
** multiple properties
```

```
*/
```

```
PROCEDURE Toggle_AutoCommit_Mode IS
```

```
mi_id MenuItem;
```

```
val VARCHAR2(10);
```

```
BEGIN
```

```
mi_id := Find_Menu_Item('Preferences.AutoCommit');
```

```
/*
```

```
** Determine the current checked state of the AutoCommit
```

```
** menu checkbox item
```

```
*/
```

```
val := Get_Menu_Item_Property(mi_id,CHECKED);
```

```
/*
```

```
** Toggle the checked state
```

```
*/
```

```
IF val = 'TRUE' THEN
```

```
Set_Menu_Item_Property(mi_id,CHECKED,PROPERTY_FALSE);
```

```
ELSE
```

```
Set_Menu_Item_Property(mi_id,CHECKED,PROPERTY_TRUE);
```

```
END IF;
```

```
END;
```

Question No : 9

There are certain errors that are specific to the Salary item on the Employees form. You want to trap these errors only when the user navigates from the Salary item.

You have a form-level On-Error trigger that traps errors that apply to the form in general,

but you additionally code an item-level On-Error trigger for the Salary item.

When testing the form, you find that the general errors are not trapped when you navigate from the Salary item. What can you do to correct this problem?

- A. Call the form level On-Error trigger from the item-level On-Error trigger.
- B. Call the item-level On-Error trigger from the form-level On-Error trigger.
- C. Change the Execution Hierarchy property for the item-level On-Error trigger.
- D. Change the Execution Hierarchy property for the form-level On-Error trigger.
- E. Move all the code to a PL/SQL program unit and call it from both the form level and item level On-Error triggers.

Answer: C

Explanation: when you have a WHEN-NEW-ITEM-INSTANCE :if you create a trigger on item, block and form-level, then only the ITEM-Level will start. If you use the exec-hierarchy Override.If all trigger use After, then the FORM, BLOCK and ITEM starts in that sequence.If all trigger use Before, then the ITEM, BLOCK and FORM starts in that sequence.the execution-hierarchy on FORM-Level is ignored, because there is no higher level than FORM

Question No : 10

The Credit_Rating item in the Customers block of an Order Entry form must be restricted to three possible values: Good, Poor, or Null (the latter value indicates that the credit rating has not been determined). Order entry clerks must be able to update this item to any of the preceding three values.

You want to change the item to a check box labeled "Credit Risk" that should be selected if the customer has poor credit, the check box should not be selected if the customer's credit rating is good or undetermined.

| Label | Credit Risk |
|-----------------------------------|-------------|
| Access Key | |
| Implementation Class | |
| Value when Checked | Bad |
| Value when Unchecked | Good |
| Check Box Mapping of Other Values | Unchecked |
| Popup Menu | <Null> |
| Navigation | |
| Keyboard Navigable | Yes |
| Mouse Navigate | Yes |
| Previous Navigation Item | <Null> |
| Next Navigation Item | <Null> |
| Data | |
| Data Type | Char |
| Data Length Semantics | BYTE |
| Maximum Length | 4 |
| Initial Value | |

You change the item type to Checkbox, set other properties as shown in the Exhibit, and then run your form and insert three records: two with good credit and the check box deselected, and one with poor credit and the check box selected. You commit the data and query the records, with the following result set:

| CUST_ID | FIRST_NAME | LAST_NAME | CREDIT_RATING |
|---------|------------|-----------|---------------|
| 10001 | Gamer | Pam | |
| 1002 | Wallace | Sheila | |
| 1003 | Maslen | Glenn | Poor |

The first two records show an undetermined credit rating, although your intention was to set the value to Good for these customers. What change must you make in the properties of the Credit_Rating item to enable values of Good, Poor, and Null to be entered?

- A. Change the initial Value property to Good.
- B. Change the Check Box Mapping of Other Values property to Not Allowed.
- C. Change the initial Value property to Good and the Value When Unchecked property to Null.
- D. Change the initial Value property to Good and the Check Box Mapping of Other Values property to Null.

E. Change the initial Value property to Good and the Check Box Mapping of Other Values property to checked.

F. Change the item type. It is not appropriate to use a check box to enable entry and update of more than two values in an item.

Answer: F