

Oracle

Exam 1z0-478

Oracle SOA Suite 11g Certified Implementation Specialist

Verson: Demo

[Total Questions: 10]

Question No : 1

You want to include documentation in the BPEL source code for a business rule component that you are adding to your BPEL model. How would you enter this documentation?

- A. As the value for a BPEL global variable
- B. As a comment attribute on the surrounding scope element
- C. As an annotation on the business rule component
- D. As user documentation on the business rule component

Answer: C

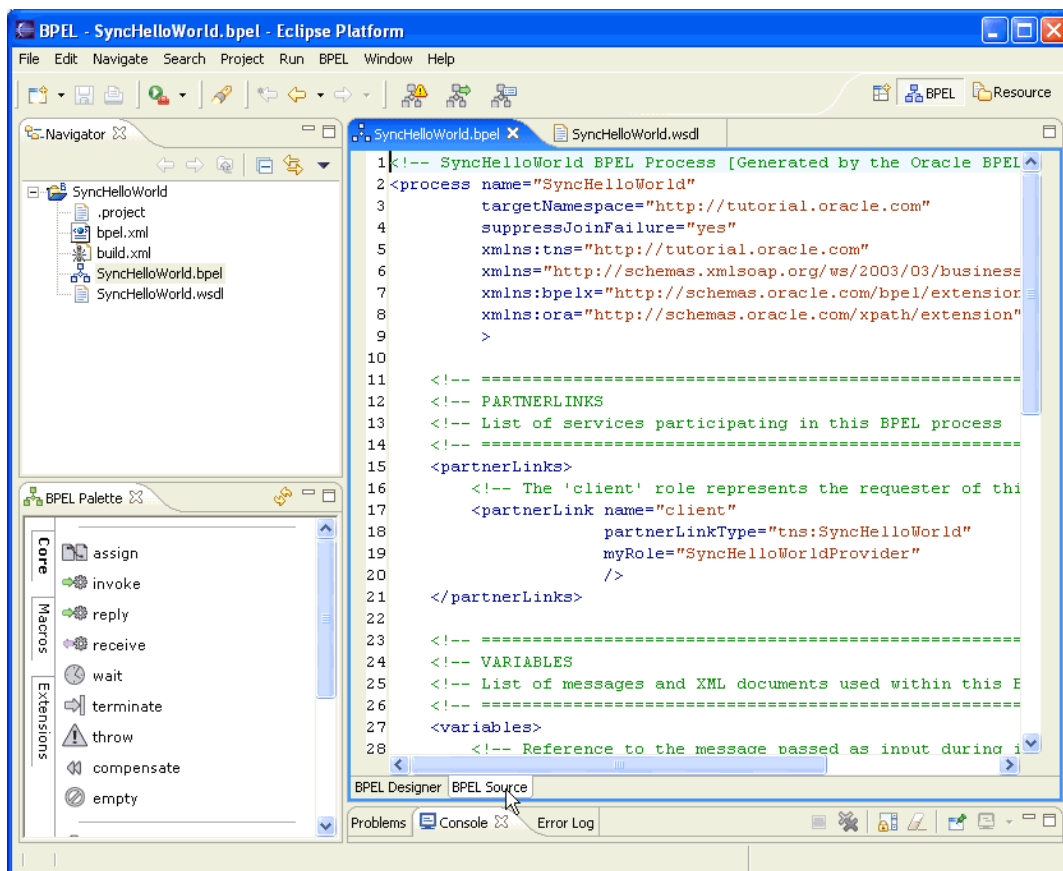
Explanation:

Note:

* Example

Viewing BPEL Source Code

At the bottom of the window, you can use the BPEL Designer and BPEL Source tabs to switch between graphical editing mode (BPEL Designer) and text-editing mode for the source code of the BPEL process (BPEL Source). Two-way editing is enabled; that is, changes you make in one mode are reflected in the other mode.



Question No : 2

Identify the statement that describes an ESB.

- A. An ESB provides a mediation layer between services and consumers.
- B. An ESB facilitates a point-to-point approach to application integration.
- C. An ESB is an execution engine providing Java EE capabilities.
- D. An ESB makes service provider addresses visible to service consumers.

Answer: A

Explanation: * An enterprise service bus (ESB) is a software architecture model used for designing and implementing the interaction and communication between mutually interacting software applications in service-oriented architecture (SOA). As a software architecture model for distributed computing it is a specialty variant of the more general client server software architecture model and promotes agility and flexibility with regards to communication and interaction between applications. Its primary use is in enterprise application integration (EAI) of heterogeneous and complex landscapes.

* An enterprise service bus (ESB) is a software architecture for middleware that provides fundamental services for more complex architectures. For example, an ESB incorporates the features required to implement a service-oriented architecture (SOA). In a general sense, an ESB can be thought of as a mechanism that manages access to applications and services (especially legacy versions) to present a single, simple, and consistent interface to end-users via Web- or forms-based client-side front ends.

Question No : 3

You just added a business rule component to the components section of the SOA Composite Editor canvas. You open your business process for editing and notice that there is no partner link to the decision service for the new rule component.

What do you do next to make the link appear?

- A. Add an invoke activity to the BPEL model to call the decision service.

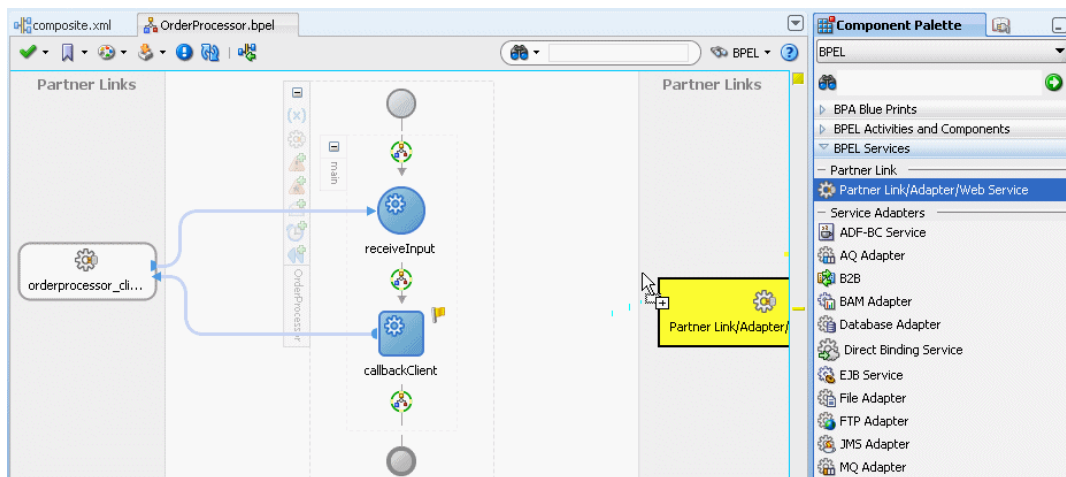
- B. Edit the business rule component and specify the If/then rules or the decision table.
- C. Add a business rule component to the BPEL model.
- D. Add a partner link to the BPEL model.

Answer: D

Explanation: How to Create a Partner Link

To create a partner link:

- ✍ In the SOA Composite Editor, double-click the BPEL process service component. Oracle BPEL Designer is displayed.
- ✍ In the Component Palette, expand BPEL Services.
- ✍ Drag a Partner Link into the appropriate Partner Links swimlane



The Create Partner Link dialog appears.

- ✍ Complete the fields for this dialog

Note:

- * A partner link enables you to define the external services with which the BPEL process service component is to interact. You can define partner links as services or references (for example, through a JCA adapter) in the SOA Composite Editor or within a BPEL process service component in Oracle BPEL Designer.
- * A partner link type characterizes the conversational relationship between two services by defining the roles played by each service in the conversation and specifying the port type provided by each service to receive messages within the conversation.

Question No : 4

How is a SAML token used by OWSM for identity propagation?

- A. As each web service in a chain is invoked, OWSM generates a SAML token and inserts it in the WS-Security header of the request message.
- B. A SAML token is generated on invocation of the first web service in a chain and is stored

in the Java Authentication and Authorization (JAAS) Subject so it can be used throughout the transaction by subsequent web services.

C. A SAML token is used to determine the destination address of the next web service in the chain.

D. The SAML token, embedded in the X.509 certificate or Kerberos ticket, is extracted by OWSM and delivered to the next web service in the chain.

Answer: A

Explanation: Propagating Identities through a Chain of Web Services

A web service may invoke another web service which in turn may invoke yet another web service

to complete a single transaction (this pattern is known as “chained web services”). Each of the

services in the chain may be protected. Instead of checking which service is calling which other

service, Oracle WSM allows you to check who the original user invoking the chain of web services is. Oracle WSM policies can be used to propagate the original user’s identity across the

chained web services. Following successful authentication to the first web service in the chain,

Oracle WSM sets the user as a Java Subject used throughout the transaction. When invoking

another service, the Oracle WSM client policy picks up the user identity from the Java Subject,

generates a SAML token based on the Subject’s information, and inserts the SAML token in the

WS-Security header of the request message to be sent to the service provider. This allows all the

web services in a chain to track the identity of the actual user calling a web service endpoint

instead of having the identity of the prior service in the chain calling the first web service to get

that information.

Note:

* Security Assertion Markup Language 2.0 (SAML 2.0) is a version of the SAML standard for exchanging authentication and authorization data between security domains. SAML 2.0 is an XML-based protocol that uses security tokens containing assertions to pass information about a principal (usually an end user) between a SAML authority, that is an identity provider, and a SAML consumer, that is a service provider. SAML 2.0 enables web-based authentication and authorization scenarios including cross-domain single sign-on

(SSO).

Question No : 5

Which two options are allowed in a decision table?

- A. An action modifying an output fact
- B. Asserting an output fact in a decision rule action
- C. Calling a rules function in an assertion
- D. Having rules specifying different actions

Answer: A,D

Explanation:

Note:

* After you create a Decision Table there are operations that you may want to perform on the Decision Table, including the following:

Compact or split cells in a Decision Table

Merge a condition or split a condition in a Decision Table

Finding and resolving conflicts between rules in a Decision Table

Find and fix gaps in a Decision Table

Question No : 6

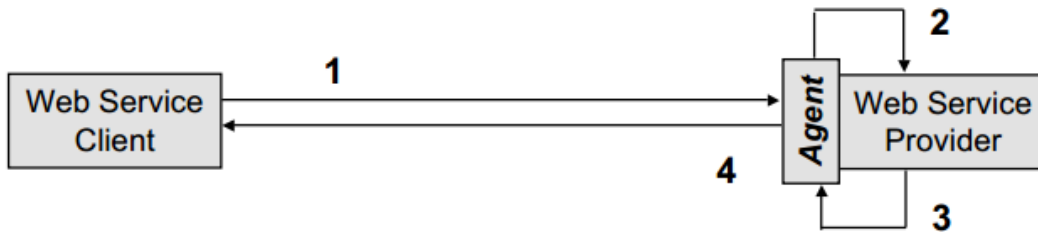
An Oracle Web Services Manager (OWSM) agent _____.

- A. Can apply categories of policies in any specified order
- B. Generates a request to an LDAP directory to look up policy definitions
- C. Always fails if the Policy Manager becomes unavailable
- D. Intercepts requests to and responses from a client or service

Answer: D

Explanation: The OWSM Agent protects access to a web service at the web service provider (server-side Agent)

- Step1: The client posts a request to a web service
- Step2: The Agent intercepts the request, applies security policies (e.g., decryption, signature verification, authentication, authorization), and passes the request to the web service
- Step3: The web service returns a response
- Step4: The Agent intercepts the response, applies security policies (e.g., encryption), and passes the response to the client



Question No : 7

Composite A has two versions deployed to the SOA runtime. Version 2.0 is the default revision, and Version 1.0 is an earlier (but active) revision. Version 2.0 has 100 instances in the Running state also hits 50 instances that are waiting for a callback on a mid-process < receiver > within a BPEL component in the composite. You undeploy Version 2.0.

Which statement describes what happens after undeployment completes?

- A. All running Instances and the callbacks are allowed to complete on Version 1.0, but all new requests are served by Version 1.0.
- B. All running Instances are allowed to complete, the callbacks fail after undeployment and all new requests are served by Version 1.0.
- C. All running instances immediately go stale, including the instances that are awaiting callbacks on the mid process < receive >.
- D. All running instances immediately go stale, but the callbacks are processed by Version 1.0.

Answer: C

Explanation:

Note:

You can undeploy SOA composite applications from Oracle Enterprise Manager Fusion Middleware Control with the Undeploy SOA Composite wizard. Using the Undeploy SOA Composite wizard has the following consequences:

- * The instance state of the undeployed composite application is set to stale. The instance state is available in the instance listing, and you can access audit trail and flow trace details.
- * If you undeploy the default revision of the SOA composite application (for example, 2.0), the next active, available revision of the application is automatically designated as the new default (for example, 1.0).
- * You can no longer configure and monitor this revision of the application.
- * You can no longer process instances of this revision of the application.
- * The state of currently running instances is changed to stale and no new messages sent to this composite are processed.
- * A warning message is displayed at the end of this wizard when you undeploy the default composite revision.

Question No : 8

Identify the correct description of a business service.

- A.** It is a service that is closely aligned with the goals of the business.
- B.** It is metadata about an external service interface that enables Oracle Service Bus to integrate with the external service.
- C.** It is programmable entity that enables Oracle Service Bus to connect to a Wide variety of interfaces.
- D.** It is a complicated object that often takes days or weeks to implement, but it is highly scalable and reliable after it is complete.

Answer: B

Question No : 9

Which activity is used to invoke a human task from a BPEL process?

- A. Invoke
- B. Human task
- C. Task
- D. Invoke human task
- E. Start human task

Answer: A

Explanation:

Note:


* Activities are the building blocks of a BPEL process service component. Oracle BPEL Designer includes a set of activities that you drag into a BPEL process service component. You then double-click an activity to define its attributes (property values). Activities enable you to perform specific tasks within a BPEL process service component. For example, here are several key activities:

/ An assign activity enables you to manipulate data, such as copying the contents of one variable to another.

/ An invoke activity enables you to invoke a service (identified by its partner link) and specify an operation for this service to perform.

/ A receive activity waits for an asynchronous callback response message from a service.

* Invoking a human task from a BPEL process is a two-step process:

 Creating a human task.

 Wiring and invoking the human task from BPEL.

Question No : 10

Which statement is true about an if-then rule evaluation?

- A. It can be evaluated more than once.
- B. It is evaluated once and only once.

- C. It must evaluate only native variable types.
- D. It cannot change the assessment for another if-then rule.

Answer: A

Explanation: <http://www.oracle.com/partners/en/knowledge-zone/applications/soasuite11g-1877659.pdf>