

Oracle

Exam 1z0-546

StorageTek Tape Libraries Essentials

Verson: Demo

[Total Questions: 10]

Question No : 1

Why would you use the db_export utility in a High Availability environment?

- A. To send the database to another server
- B. To upgrade to a new ACSLS version with a different database structure
- C. To save the file as a system backup
- D. To permit reformatting of the disk

Answer: B

Explanation: The **db_export.sh** utility exports the ACSLS database table data and ACSLS control files in preparation for an upgrade installation or a reinstallation of ACSLS.

Reference: StorageTek ACSLS, Automated Cartridge System Library Software

Question No : 2

When configuring drives in logical libraries which of the following is false?

- A. To assign multiple drives to a logical library, the drives must be located in the same ACS.
- B. Drives may be shared across multiple logical libraries.
- C. Both LTO and Enterprise drives may be configured into logical libraries.
- D. Drives may only be added to logical libraries through the ACSLS GUI.

Answer: A

Explanation:

Note: When partitioning the StorageTek SL8500, SL3000 or SL500 libraries into logical libraries, one can assign volumes and drives to the logical library to enable library consolidation, gain capacity on demand, and allow only the client connected to the logical library to access those volumes and drives.

Note: logical library

A virtual representation of a physical library. Synonymous with virtual library partition.

Question No : 3

What ACLs command would you use to stop the acslm process from accepting new requests?

- A. idle
- B. stop req all
- C. q requests now
- D. requests wait

Answer: A

Explanation: Use this procedure to suspend request processing by putting ACSLS in the idle state. Typically, this procedure is used before shutting down ACSLS, but you can also use it to temporarily stop ACSLS request processing.

To idle ACSLS, do the following:

1. From a cmd_proc, enter the following command:

idle

ACSLM processes all current requests, rejects all new requests, and goes into the idle state.

The following message appears when ACSLS request processing stops.

ACSLM Request Processing Stopped: Success.

Reference; StorageTek ACSLS, Automated Cartridge System Library Software Idling ACSLS

Question No : 4

Which generations of LTO tape drives does SL500 support?

- A. LTO1, LTO2, LTO3, LTO4, and LTO5
- B. LTO2, LTO3, LTO4, and LTO5
- C. LTO3, LTO4, and LTO5
- D. LTO4 and LTO5

Answer: A

Explanation: Capacity: The SL500 scales from 30 to 575 LTO slots

with a maximum capacity of more than 862 terabytes of uncompressed data (LTO5)

Reference: StorageTek SL500 Modular Library System, FAQs

Question No : 5

The System Detail SLC screen displays health indicators for which four devices in an SL3000?

- A. Rotational and AFM CAPs
- B. Drives
- C. Media
- D. Power supplies
- E. Robot(s)

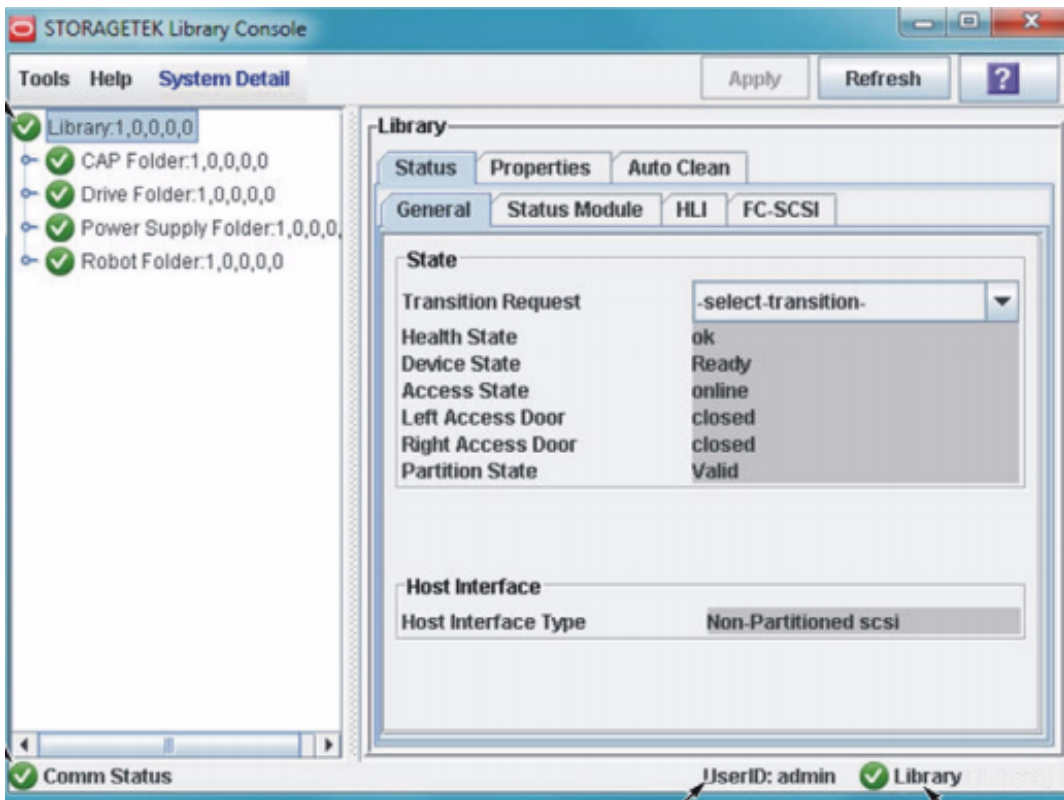
Answer: A,B,D,E

Explanation: The SL Console screen displays health indicators for each of the following devices:

- *Library
- * Rotational and AEM CAPs (A)
- * Drives (B)
- * Power supplies (D)
- * Robot(s) (E)
- * AEM safety doors

Please reference the figure below.

FIGURE 6-1 SL Console Health Status Indicators



Reference: StorageTek SL3000 Modular Library System, User's Guide , Library and Device Status

Question No : 6

When planning for partitioning the SL8500, which is NOT an assessment question?

- A. How many partitions will there be in the library?
- B. Is this a new or existing installation?
- C. How many cartridges, free slots, and tape drives are needed for each partition?
- D. How many CAP slots are needed for each partition?

Answer: D

Explanation: All HandBots and CAPs in the library are shared resources which cannot be assigned exclusively to one partition.

Question No : 7

Which of the items are reports available from SLC regarding partitioning on an SL500?

- A. Cartridge Cell and Media Summary
- B. Host Connections Summary
- C. Orphaned Cartridge Report
- D. Partition Summary
- E. Partition Details
- F. All of the above

Answer: F

Explanation: Partitions—Reports include:

Partitions—Reports—Cartridge Cell and Media Summary

Partitions—Reports—Host Connections Summary

Partitions—Reports—Orphaned Cartridge Report

Partitions—Reports—Partition Details

Partitions—Reports—Partition Summary

Reference: StorageTek SL500 Modular Library System, Partition Report Screens

Question No : 8

If you have a customer with throughput requirements >10 TB/hr, which libraries would you recommending?

- A. SL24 or SL48
- B. SL48 or SL500
- C. SL500 or SL3000
- D. SL3000 or SL8500

Answer: D

Explanation: SL3000

Maximum Native Throughput (TB/hr):48.4

SL8500

Maximum Native Throughput (TB/hr):552.9

Note:**SL8500 (max config of 32 libraries)**

T9840B (2,048 drives, 19 MB/sec) – 140 TB/hr
T9840C (2,048 drives, 30 MB/sec) – 221

TB/hrT9940B (2,048 drives, 30 MB/sec) – 221 TB/hrLTO Gen 2 (2,048 drives, 30–35 MB/sec) – up to 258 TB/hrLTO Gen 3 (2,048 drives, 80 MB/sec) – up to 590 TB/hrSDLT 600 (2,048 drives, 36 MB/sec) – 265 TB/hr

Reference:<http://www.oracle.com/us/products/servers-storage/storage/tape-storage/sl3000-modular-library-system/comparisons/index.html>

Question No : 9

A StorageTek T1000B drive can be licensed and enrolled in the Oracle Key Manager (OKM) using which two tools?

- A. VOP
- B. OKM
- C. ACSLS
- D. VSM
- E. SLC

Answer: A,E

Explanation: A: Virtual Operator Panel can be use for enrollment.

E: When a customer purchases a hardware activation key to use more physical storage an encrypted key file is sent through e-mail. The file is then loaded into the library using the Storage Library Console (SLC).

Reference: StorageTek T10000 Tape Drive, Systems Assurance Guide

Question No : 10

Identify two recommendations for utilizing the top rail of SL8500.

- A. Use the top rail to support applications with active enters and ejects.
- B. Use the top rail as an archival LSM for less active tapes.
- C. Use the top rail to support applications with very active tapes but few enters and ejects.
- D. Avoid using the top rail as an archival location.

Answer: B,C

Explanation: Tape cartridges can be archived to a rail without tape drives.

A suggestion would be to use the top rail for these scenarios.

Example: inactive volumes, least recently used (LRUs) volumes, or volumes that require few enter and eject operations.

Reference; StorageTek SL8500 Modular Library System, Best Practises, Tape Drive Placement