

# **VMware**

## **Exam 2V0-631**

**VMware Certified Professional 6 - Cloud Management and  
Automation Beta**

**Verson: Demo**

**[ Total Questions: 10 ]**

**Question No : 1**

An executive has asked for a report showing the number of machines in each business group and the total resources that those machines use.

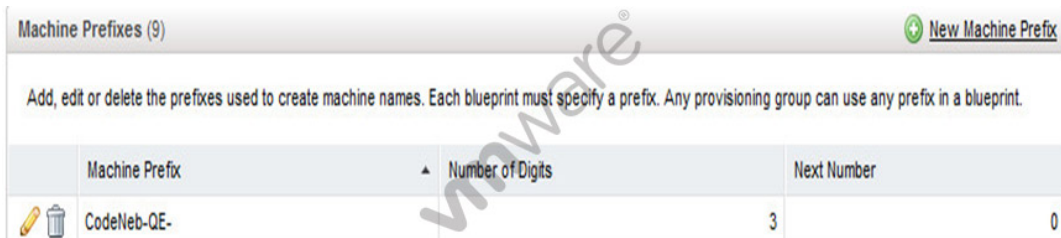
Which Resource Report can you run to satisfy the request?

- A. IaaS Capacity Usage by Group.
- B. IaaS Capacity Usage by Owner.
- C. IaaS Capacity Usage by Compute Resource.
- D. IaaS Capacity Usage by Blueprint.

**Answer: A**

**Question No : 2**

Refer to the Exhibit.



Machine Prefix	Number of Digits	Next Number
CodeNeb-QE-	3	0

Three machines have already been created with the Machine Prefix shown in the exhibit.

Based on the exhibit, what will be the name of the next machine?

- A. CodeNeb-QE-3
- B. CodeNeb-QE-4
- C. CodeNeb-QE-004
- D. CodeNeb-QE-003

**Answer: D**

**Question No : 3**

Which VMware NSX for vSphere components can be created on demand using vRealize Automation? (Choose two.)

- A. The Logical Switch
- B. The Distributed Router appliance
- C. The Distributed Firewall appliance
- D. The NSX Edge Services Gateway appliance

**Answer: A,D**

**Question No : 4**

Senior IT leadership wants information to help determine workload placement and tradeoffs between buying new hardware or using a public cloud provider.

What VMware product provides that information?

- A. vRealize Business
- B. vCenter Chargeback
- C. vCenter Configuration Manager
- D. vRealize Operations

**Answer: A**

**Question No : 5**

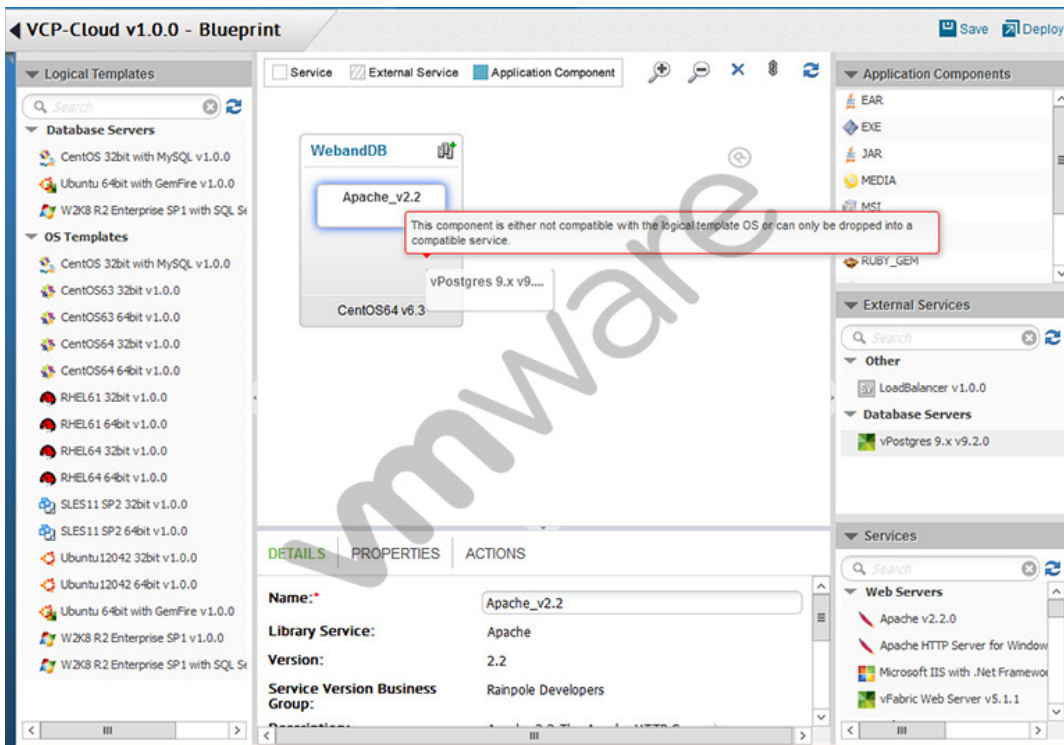
What role does a user need in order to request and manage machines on behalf of other users?

- A. Fabric Group Manager
- B. Tenant Administrator
- C. IaaS Administrator
- D. Support User

**Answer: D**

**Question No : 6**

Refer to the Exhibit.



While building an application blueprint, the administrator cannot add a vPostgres database service to the new operating system, as shown in the exhibit.

What is needed to resolve this?

- A. Drag and drop vPostgres from the Services menu onto the new operating system.
- B. Delete the current operating system and deploy a new Database Server that includes vPostgres.
- C. Drag and drop a vPostgres Application Component to join the existing operating system and vPostgres objects.
- D. Add an External Service Instance Profile to the Deployment Environment.

**Answer: A**

### Question No : 7

Which two Network Profiles could an administrator create to ensure every machine can access the external network and is also accessible from the external network? (Choose two.)

- A. NAT Network Profile

- B. Private Network Profile
- C. Routed Network Profile
- D. External Network Profile

**Answer: A,C**

**Question No : 8**

What are two valid usable cloud resources that can be leveraged by vRealize Automation?  
(Choose two.)

- A. Google Compute Engine
- B. SCVMM
- C. KVM (RHEV)
- D. Standalone ESXi

**Answer: B,C**

**Question No : 9**

After successfully creating a service blueprint, which two steps must be completed to allow the newly created service blueprint to be available for use? (Choose two.)

- A. From the Service Blueprints list, highlight the new Service Blueprint and select Publish.
- B. From the Catalog Management Services list, highlight the new Service Blueprint and select Publish.
- C. From the Catalog Items list, configure the Service Blueprint to be part of a Service.
- D. From the Catalog Items list, edit the Service Blueprint and change its Status to Active.

**Answer: A,C**

**Question No : 10**

What is a prerequisite for system administrators being able to add tenant administrators?

- A. The configuration of Identity Stores.
- B. The installation of IaaS.

- C. The creation of an IaaS administrator.
- D. The creation of an Infrastructure administrator.

**Answer: A**