

# **Microsoft**

## **Exam 70-341**

### **Core Solutions of Microsoft Exchange Server 2013**

**Version: Demo**

**[ Total Questions: 10 ]**

**Topic break down**

<b>Topic</b>	<b>No. of Questions</b>
<b>Topic 1: Fabrikam, Inc</b>	<b>1</b>
<b>Topic 4: A.Datum Corporation</b>	<b>2</b>
<b>Topic 5: Proseware, Inc</b>	<b>1</b>
<b>Topic 7: Mix Questions</b>	<b>6</b>

**Topic 1, Fabrikam, Inc****Overview**

Fabrikam, Inc., is a pharmaceutical company located in Europe. The company has 5,000 users. The company is finalizing plans to deploy an Exchange Server 2013 organization.

The company has offices in Paris and Amsterdam.

**Existing Environment****Active Directory Environment**

The network contains an Active Directory domain named fabrikam.com. An Active Directory site exists for each office.

**Network Infrastructure**

The roles and location of each server are configured as shown in the following table.

Server name	Role	Location
DC1	Domain controller Global catalog server	Paris office
DC2	Domain controller	Paris office
DC3	Schema master Domain controller Global catalog server	Amsterdam office
FS1	File server	Paris office
FS2	File server	Paris office
FS3	File server	Amsterdam office
FS4	File server	Amsterdam office
TMG1	Microsoft Forefront Threat Management Gateway (TMG) 2010	Perimeter network in the Paris office

Client computers run either Windows 7 or Windows 8 and have Microsoft Office 2010 installed.

The Paris office uses the 192.168.1.0/24 IP range. The Amsterdam office uses the 192.168.2.0/24 IP range.

The offices connect to each other by using a high-speed, low-latency WAN link. Each office has a 10-Mbps connection to the Internet.

**Planned Exchange Infrastructure**

The company plans to deploy five servers that run Exchange Server. The servers will be configured as shown in the following table.

Server name	Server role	Location
EX1	<ul style="list-style-type: none"><li>Exchange Server 2013 Mailbox server</li><li>Exchange Server 2013 Client Access server</li></ul>	Paris office
EX2	<ul style="list-style-type: none"><li>Exchange Server 2013 Mailbox server</li><li>Exchange Server 2013 Client Access server</li></ul>	Paris office
EX3	<ul style="list-style-type: none"><li>Exchange Server 2013 Mailbox server</li><li>Exchange Server 2013 Client Access server</li></ul>	Amsterdam office
EX4	<ul style="list-style-type: none"><li>Exchange Server 2013 Mailbox server</li><li>Exchange Server 2013 Client Access server</li></ul>	Amsterdam office
EDGE1	Exchange Server 2010 Edge Transport server	Perimeter network in the Paris office

The company plans to have mailbox databases replicated in database availability groups (DAGs). The mailbox databases and DAGs will be configured as shown in the following table.

DAG name	Database name	DAG member
DAG1	OperationsDB FinanceDB SalesDB	EX1, EX3
DAG2	MarketingDB ResearchDB LabDB	EX2, EX4

DAG1 will use FS1 as a file share witness. DAG2 will use FS3 as a file share witness.

You plan to create the following networks on each DAG:

- ✍ A dedicated replication network named DAGNET1
- ✍ A MAPI network named DAGNET2

All replication traffic will run on DAGNET1. All client connections will run on DAGNET2. Client connections must never occur on DAGNET1. Replication traffic must only occur on DAGNET2 if DAGNET1 is unavailable.

Each Exchange Server 2013 Mailbox server will be configured to have two network adapters.

The following two mailbox databases will not be replicated as part of the DAGs:

- ✍ A mailbox database named AccountingDB that is hosted on EX1
- ✍ A mailbox database named TempStaffDB that is hosted on EX4

EDGE1 will have an Edge Subscription configured, with both EX1 and EX2 as targets.

## Requirements

### Planned Changes

An external consultant reviews the Exchange Server 2013 deployment plan and identifies the following areas of concern:

- ✍ The DAGs will not be monitored.
- ✍ Multiple Edge Transport servers are required to prevent the potential for a single point of failure.

### Technical Requirements

Fabrikam must meet the following technical requirements:

- ✍ Email must be evaluated for SPAM before the email enters the internal network.
- ✍ Production system patching must minimize downtime to achieve the highest possible service to users.
- ✍ Users must be able to use the Exchange Control Panel to autonomously join and disjoin their department's distribution lists.
- ✍ Users must be able to access all Internet-facing Exchange Server services by using the names of mail.fabrikam.com and autodiscover.fabrikam.com.

The company establishes a partnership with another company named A. Datum

Corporation. A. Datum uses the SMTP suffix adatum.com for all email addresses. Fabrikam plans to exchange sensitive information with A. Datum and requires that the email messages sent between the two companies be encrypted. The solution must use Domain Security.

Users in the research and development (R&D) department must be able to view only the mailboxes of the users in their department from Microsoft Outlook. The users in all of the other departments must be prevented from viewing the mailboxes of the R&D users from Outlook.

Administrators plan to produce HTML reports that contain information about recent status changes to the mailbox databases.

Fabrikam is evaluating whether to abort its plan to implement an Exchange Server 2010 Edge Transport server and to implement a Client Access server in the Paris office instead. The Client Access server will have anti-spam agents installed.

### Question No : 1 - (Topic 1)

An administrator recommends removing EDGE1 from the implementation plan and adding a new Client Access server named CAS-8 instead.

You need to identify which anti-spam feature will NOT be available on CAS-8.

Which anti-spam feature should you identify?

- A. Connection Filtering
- B. Sender Filtering
- C. Content Filtering
- D. Recipient Filtering

**Answer: A**

### Topic 4, A.Datum Corporation

#### Overview

A. Datum Corporation is an airline catering company that has 8,000 users. A. Datum has three main offices. The offices are located in Detroit, Chicago, and New York.

#### Existing Environment

##### Active Directory Environment

The network contains an Active Directory forest named adatum.com. The forest contains a single domain. All domain controllers run Windows Server 2012.

Each main office contains two domain controllers. Each office is configured as an Active Directory site.

The functional level of the forest is Windows Server 2012.

### Network Infrastructure

The offices connect to each other by using a dedicated WAN link. Only the office in New York and the office in Detroit connect directly to the Internet. Each office has a firewall.

The public DNS records for A. Datum are configured as shown in the following table.

DNS record name	Record type	Data
Adatum.com	Mail exchanger (MX)	[10] mail.adatum.com
Mail.adatum.com	Host (A)	131.107.1.200
Autodiscover.adatum.com	Alias (CNAME)	Mail.adatum.com
Detroitmail.adatum.com	Host (A)	131.107.2.200
Autodiscover.detroit.adatum.com	Alias (CNAME)	Detroitmail.adatum.com
@	Text (TXT)	V=spf1 ip4:131.107.1.200 -all

The external interface for the firewall in the New York office is configured to use an IP address of 131.107.1.200 and to pass inbound traffic on port 25 and port 443 to EX2.

The external interface for the firewall in the Detroit office is configured to use an IP address of 131.107.2.200 and to pass inbound traffic on port 443 to EX4.

The Active Directory site is configured as shown in the Sites exhibit. (Click the Exhibit button.)

### Exchange Server Organization

A. Datum has an Exchange Server 2013 organization that contains two servers. The servers are configured as shown in the following table.

Server name	Role	Site
EX1	Mailbox Client Access	Chicago
EX2	Mailbox Client Access	New York

Each server contains 15 mailbox databases.

Users use the name mail.adatum.com to connect to their mailbox from the Internet. The users use the FQDN of the servers to connect from the internal network.

AM of the users in the Detroit office have a mailbox hosted on EX2.

The default email address policy contains a single email address format of @adatum.com.

A separate Send connector exists for the Chicago office and the New York office. The local servers in each office are the only source servers in each Send connector.

The New York office is configured as a hub site. Antimalware filtering is disabled on EX1 and EX2.

### Problem Statements

A. Datum identifies the following issues:

- ✍ Users in the Detroit office report that sometimes, Microsoft Outlook takes a long time to open.
- ✍ During a recent storage failure, administrators failed to restore the latest backup and lost all of the email messages from the previous 48 hours.
- ✍ Users report that the email messages sent to some Internet domains are not received. Users in the Chicago office report that some of their email messages generate a non-delivery report (NDR).
- ✍ The help desk in the New York office reports that its most common Exchange-related task is to restore email messages that were deleted by users more than 14 days ago. The task requires time-consuming restore operations by the help desk.

### Requirements

#### Business Requirements

A. Datum wants to provide users with the ability to access their email from Internet Explorer 10, even when the users are disconnected from the network. This ability must only be available if the users log on to Outlook Web Access by using the Private option.

#### Planned Changes

You plan to deploy three additional Exchange Server 2013 servers. The servers will be configured as shown in the following table.

Server name	Role	Site
EX3	Mailbox	Detroit
EX4	Client Access	Detroit
EX5	Client Access	New York



After the planned deployment, all of the mailboxes of the Detroit office users will be moved to EX3. All of the Detroit office users will use the name detroitmail.adatum.com when they connect from the Internet and the name ex4.adatum.com when they connect from the internal network.

### Technical Requirements

A. Datum identifies the following technical requirements:

- ✍ All existing and future mailboxes must be limited to 5 GB of storage.
- ✍ Antimalware and anti-spam filtering must be enabled for the entire Exchange Server organization.
- ✍ If storage for the mailbox database fails, administrators must be able to recover email messages handled by transport services for to the last five days.
- ✍ Only the members of a group named Executives must be able to schedule meetings in a room mailbox named Boardroom. Meeting requests must not be moderated.
- ✍ All of the servers in the New York office that have the Client Access server role installed must be accessed by using a load balancing solution that can mark a server as down if a specific URL on the server is unavailable.

### Mailbox Creation Requirements

A. Datum identifies the following requirements for creating new mailboxes:

- ✍ All mailboxes must automatically have single item recovery enabled.
- ✍ All mailboxes must automatically have the Exchange ActiveSync feature disabled.

### Question No : 2 - (Topic 4)

**NO: 5**

You need to recommend a solution for the New York office that meets the technical requirements for client access.

What should you include in the recommendation? (Each correct answer presents a complete solution. Choose all that apply.)

- A. DNS round robin
- B. a Layer 4 hardware load balancer
- C. a Layer 7 hardware load balancer
- D. the Network Load Balancing (NLB) feature
- E. a Client Access server array

**Answer: C,E**

**Question No : 3 DRAG DROP - (Topic 4)**

You need to recommend a solution to meet the mailbox creation requirements.

Which three actions should you recommend performing in sequence? (To answer, move the appropriate three actions from the list of actions to the answer area and arrange them in the correct order.)

Actions	Answer Area
Copy the ScriptingAgentConfig.xml file to all of the Mailbox servers.	
Run the <b>Enable-CmdletExtensionAgent "Scripting Agent"</b> command.	
Run the <b>Set-CmdletExtensionAgent "Scripting Agent"</b> command.	
Copy the ScriptingAgentConfig.xml file to all of the Client Access servers.	
Edit the ScriptingAgentConfig.xml.sample file, and then rename the file as ScriptingAgentConfig.xml.	

**Answer:**

Actions	Answer Area
Copy the ScriptingAgentConfig.xml file to all of the Mailbox servers.	Edit the ScriptingAgentConfig.xml.sample file, and then rename the file as ScriptingAgentConfig.xml. Copy the ScriptingAgentConfig.xml file to all of the Mailbox servers. Run the <b>Enable-CmdletExtensionAgent "Scripting Agent"</b> command.
Run the <b>Enable-CmdletExtensionAgent "Scripting Agent"</b> command.	
Run the <b>Set-CmdletExtensionAgent "Scripting Agent"</b> command.	
Copy the ScriptingAgentConfig.xml file to all of the Client Access servers.	
Edit the ScriptingAgentConfig.xml.sample file, and then rename the file as ScriptingAgentConfig.xml.	

**Explanation:**

Edit the ScriptingAgentConfig.xml.sample file, and then rename the file as ScriptingAgentConfig.xml.

Copy the ScriptingAgentConfig.xml file to all of the Mailbox servers

Run the Enable-CmdletExtensionAgent "Scripting Agent" command

**Topic 5, Proseware, Inc**

**Overview**

**General Overview**

Proseware, Inc., is an international manufacturing company that has 3,000 users.

Proseware has a sales department, a marketing department, a research department, and a human resources department.

Proseware recently purchased a small competitor named Contoso, Ltd.

**Physical Locations**

Proseware has two offices. The offices are located in New York and London. The offices connect to each other by using a WAN link. Each office connects directly to the Internet.

Contoso has one office in Chicago.

**Existing Environment**

**Active Directory Environment**

The network of Proseware contains an Active Directory forest named proseware.com. The forest contains a single domain and two sites named London and New York. Each site contains two domain controllers that run Windows Server 2008 R2. The domain controllers in the New York site are named DC1 and DC2. The domain controllers in the London site are named DC3 and DC4.

All FSMO roles are hosted on DC3 and DC4.

The network of Contoso contains an Active Directory forest named contoso.com. The forest contains five domain controllers and one site.

**Exchange Server Organization**

Proseware has an Exchange Server 2013 organization that contains two database availability groups (DAGs) named DAG-NYC and DAG-LON. The DAGs are configured as shown in the following table.

Server name	Role	Site	DAG membership
EX1	Client Access Mailbox	New York	DAG-NYC
EX2	Client Access Mailbox	New York	DAG-NYC
EX3	Client Access Mailbox	London	DAG-NYC
EX4	Client Access Mailbox	London	DAG-LON
EX5	Client Access Mailbox	London	DAG-LON
EX6	Client Access Mailbox	New York	DAG-LON

The certificate used for Exchange Server 2013 has a subject name of mail.proseware.com and a Subject Alternative Name (SAN) of autodiscover.proseware.com.

Each mailbox database has three copies. All users connect to an active copy of the database on a server in their respective office. Native data protection is implemented.

NTLM communication is used exclusively for Outlook Anywhere both internally and externally.

Problem Statements

Proseware identifies the following issues:

- ✍ Users report that sometimes, they fail to access the free/busy information of the other users. You also discover that some users fail to retrieve Autodiscover settings.
- ✍ Users in the London office report that during a 24-hour WAN outage, they could see only new users in the global address list (GAL) from Outlook Web App.
- ✍ The manager of the human resources department in the New York office cannot see new London office users in the GAL until several hours after the help desk confirms that the users were created.
- ✍ A hung MExchangeOWAAppPool in Internet Information Services (IIS) on EX1 causes all of the database copies to fail over. Despite having the same CopyQueueLength and ReplayQueueLength as the copies on EX2, the copies on EX3, which have a higher activation preference, are activated, forcing user connections over the WAN.
- ✍ A custom application named App1 recently malfunctioned and sent hundreds of false positive email notifications that had a subject of System Alert: Sales Database Reaching Capacity to all of the users in the organization. While attempting to remove the email messages, an administrator ran the Search-Mailbox -DeleteContent command and erroneously deleted valid email messages from the mailboxes of some executives.

## Requirements

### Business Goal

Proseware identifies the following business goals:

- ✍ Reduce the costs associated with using bandwidth on the WAN links.
- ✍ Improve social media integration by using a Microsoft Outlook app that will be deployed to all of the users in the sales department.

### Planned Changes

Proseware plans to make the following changes:

- ✍ Implement a lagged copy for the mailbox database of the executives.
- ✍ Implement an RBAC-linked role group for the administrators at Contoso to manage the mailboxes of the Proseware users.

### Technical Requirements

Proseware identifies the following technical requirements:

- ✍ End users must be notified after one hour if the email messages that they send are not delivered.
- ✍ If mailbox database storage fails, the IT department must be able to recover old email messages that were sent up to five days earlier to the mailboxes of the executives.
- ✍ All new users hired at Contoso must have a user account in contoso.com and an Exchange Server mailbox in proseware.com. All new user accounts in contoso.com must have a user principal name (UPN) that ends with proseware.com.
- ✍ Administrators at Contoso must be able to create and manage recipient objects in the Exchange Server organization of Proseware by using their existing contoso.com administrator account. All Contoso recipient objects must reside in an organizational unit (OU) named proseware.com

### Security Requirements

The Chief Security Officer (CSO) introduces the following security requirements:


- ✍ All Outlook users who connect from the Internet must use Basic authentication only.
- ✍ All Outlook users who connect from the internal network must use NTLM authentication only.

### SLA Requirements

Due to productivity losses during some recent maintenance windows, the Chief Information Officer (CIO) introduces a new service level agreement (SLA) requiring that all servers entering or exiting a maintenance window must be taken in and out of service properly.

The SLA contains the following requirements:

- ✍ All mounted databases on the server undergoing maintenance must be activated on another server.
- ✍ All message queues on the server undergoing maintenance must be empty before maintenance can begin.
- ✍ The server undergoing maintenance must be prevented from becoming a Primary Active Manager (PAM).

 Databases copies on the server undergoing maintenance must not be activated while maintenance is occurring.

**Question No : 4 HOTSPOT - (Topic 5)**

You need to recommend which command must be run to remove the email notifications from all of the servers if App1 malfunctions again.

Which command should you recommend? (To answer, configure the appropriate options in the answer area.)

Answer Area

<input type="text"/> Get-Message Get-Queue Get-QueueDigest Get-TransportService	<input type="text"/> Get-MessageTrackingLog Get-MessageTrackingLogReport Get-Queue Suspend-Queue	<input type="text"/> Get-Message Redirect-Message Resume-Queue Search-MessageTrackingReport
---	--	---

-ResultSize unlimited | Where {\$\_.Subject -eq "System Alert: Sales Database Reaching Capacity"} |

<input type="text"/> Redirect-Message Remove-Message Redirect-Message Suspend-Message	-WithNDR \$False
---	------------------

**Answer:**

Answer Area

<input type="text"/> Get-Message Get-Queue Get-QueueDigest Get-TransportService	<input type="text"/> Get-MessageTrackingLog Get-MessageTrackingLogReport Get-Queue Suspend-Queue	<input type="text"/> Get-Message Redirect-Message Resume-Queue Search-MessageTrackingReport
---	--	---

-ResultSize unlimited | Where {\$\_.Subject -eq "System Alert: Sales Database Reaching Capacity"} |

<input type="text"/> Redirect-Message Remove-Message Redirect-Message Suspend-Message	-WithNDR \$False
---	------------------

**Question No : 5 - (Topic 7)**

You have an Exchange Server 2013 organization.

An Active Directory administrator is concerned about the permissions assigned to a group named Exchange Trusted Subsystem. Exchange Trusted Subsystem has a member named Exchange Windows Permissions.

You need to show the Active Directory administrator all of the permissions assigned to Exchange Trusted Subsystem.

What should you use?

- A. ADSI Edit
- B. Active Directory Sites and Services
- C. Dsget
- D. Active Directory Users and Computers

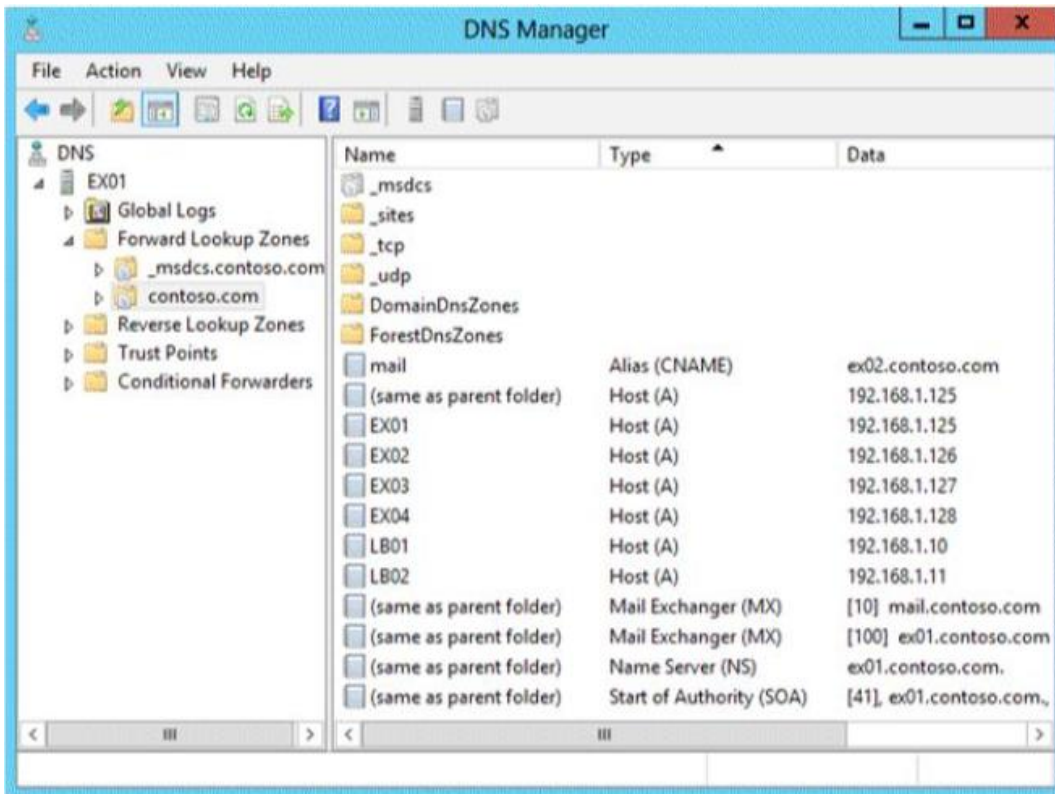
**Answer: D**

**Question No : 6 HOTSPOT - (Topic 7)**

Your company has an Exchange Server 2013 organization. All servers have the Client Access server role and the Mailbox server role installed.

The DNS Manager is shown in the exhibit. (Click the Exhibit button.)





Use the drop-down menus to select the answer choice that completes each statement.

**Answer Area**

The server named [answer choice] receives all incoming email from the Internet.

To load balance the inbound SMTP communication between two Exchange servers, [answer choice]

**Answer Area**

The server named [answer choice] receives all incoming email from the Internet.

- EX01
- EX02
- EX03
- EX04
- LB01
- LB02

To load balance the inbound SMTP communication between two Exchange servers, [answer choice]

set the priority value of ex01.contoso.com to 10.  
 create a service location (SRV) record for EX02 that has a weight of 100.  
 create a mail exchanger (MX) record for LB01 that has a priority value of 10.  
 create a mail exchanger (MX) record for LB01 that has a priority value of 100.

**Answer:**



**Answer Area**

The server named [answer choice] receives all incoming email from the Internet.

- EX01
- EX02
- EX03
- EX04
- LB01
- LB02

To load balance the inbound SMTP communication between two Exchange servers, [answer choice]

- set the priority value of ex01.contoso.com to 10.
- create a service location (SRV) record for EX02 that has a weight of 100.
- create a mail exchanger (MX) record for LB01 that has a priority value of 10.
- create a mail exchanger (MX) record for LB01 that has a priority value of 100.

**Question No : 7 DRAG DROP - (Topic 7)**

You have an Exchange Server 2013 organization that contains the servers configured as shown in the following table.

Server name	Database availability group (DAG) name	Windows Server version
EX1	DAG1	Windows Server 2008 R2 Enterprise
EX2	DAG1	Windows Server 2008 R2 Enterprise
EX3	DAG2	Windows Server 2012 R2 Datacenter
EX4	DAG2	Windows Server 2012 R2 Datacenter
EX5	None	Windows Server 2008 R2 Standard

You need to add EX2 to DAG2. The solution must maintain redundancy for all mailbox databases.

Which five actions should you perform in sequence before you can add EX2 to DAG2? To answer, move the appropriate actions from the list of actions to the answer area and arrange them in the correct order.

Actions

- Disable DAG replication for DAG1
- On EX2, remove all of the mailbox database copies
- Remove on DAG network from DAG1
- Rename EX5 as EX2
- Remove EX2 from DAG1
- Add EX5 to DAG1
- On EX2 install Windows Server 2012 R2 and Exchange Server 2013
- Create Mailbox database copies on EX5

Answer Area

Answer:

Actions

- Disable DAG replication for DAG1
- On EX2, remove all of the mailbox database copies
- Remove on DAG network from DAG1
- Rename EX5 as EX2
- Remove EX2 from DAG1
- Add EX5 to DAG1
- On EX2 install Windows Server 2012 R2 and Exchange Server 2013
- Create Mailbox database copies on EX5

Answer Area

Add EX5 to DAG1

Create Mailbox database copies on EX5

On EX2, remove all of the mailbox database copies

Remove EX2 from DAG1

On EX2 install Windows Server 2012 R2 and Exchange Server 2013

Explanation:

- Box 1: Add EX5 to DAG1
- Box 2: Create Mailbox database copies on EX5
- Box 3: On EX2, remove all of the mailbox database copies.
- Box 4: Remove EX2 from DAG1
- Box 5: On EX2 install Windows Server 2012 R2 and Exchange Server 2013

**Question No : 8 HOTSPOT - (Topic 7)**

You have an Exchange Server 2013 organization that contains three moderated distribution groups named DG1, DG2, and DG3. DG3 is a member of DG2.

You need to exclude from moderation the email messages sent from the members of DG3 to the members of DG1. The solution must maintain moderation for the email messages sent from all other users.

What command should you run? (To answer, select the appropriate options in the answer area,)

**Answer Area**

Set-DistributionGroup -Identity

**Answer Area**

Set-DistributionGroup -Identity

DG1	-AcceptMessagesOnlyFromDLMembers	DG1
DG2	-ByPassModerationFromSendersOrMembers	DG2
DG3	-ByPassNestedModerationEnabled	DG3
	-ModerationEnabled	\$false
		\$true

**Answer:**

**Answer Area**

Set-DistributionGroup -Identity

DG1	-AcceptMessagesOnlyFromDLMembers	DG1
DG2	-ByPassModerationFromSendersOrMembers	DG2
DG3	-ByPassNestedModerationEnabled	DG3
	-ModerationEnabled	\$false
		\$true

**Question No : 9 - (Topic 7)**

You have an Exchange Server 2013 organization.

The help desk reports that users fail to access their mailbox by using the URL <http://mail.contoso.com>. All of the users successfully connect to their mailbox by using Exchange ActiveSync.

You need to ensure that all of the users can access their mailbox by using the URL <http://maif.contoso.com>.

What should you configure on a Client Access server?

- A. From Internet Information Services (IIS) Manager, configure HTTP Response Headers

on the OWA virtual directory.

**B.** From Exchange Admin Center, create a new Outlook Web App mailbox policy.

**C.** From File Explorer, modify the permissions of the Web.config file in the Default Web Site folder.

**D.** From Internet Information Services (IIS) Manager, configure HTTP Redirect on the default web site.

**Answer: D**

**Question No : 10 HOTSPOT - (Topic 7)**

Your network contains an Active Directory forest. The forest contains two sites named Site1 and Site2.

You have an Exchange Server 2013 organization. Site1 contains two Mailbox servers and one Client Access server. Site2 contains two Mailbox servers and two Client Access servers.

You need to prevent messages that cannot be protected by shadow redundancy from being delivered.

What command should you run? (To answer, select the appropriate options in the answer area.)

**Answer Area**

Three empty dropdown menus for selecting command options.

**Answer Area**

<ul style="list-style-type: none"> <li>Set-TransportAgent</li> <li>Set-TransportConfig</li> <li>Set-TransportRule</li> <li>Set-TransportServer</li> <li>Set-TransportService</li> </ul>	<ul style="list-style-type: none"> <li>-RejectMessageOnShadowFailure</li> <li>-SafetyNetHoldTime</li> <li>-ShadowMessageAutoDiscardInterval</li> <li>-ShadowRedundancyEnabled</li> <li>-TransportSyncEnabled</li> </ul>	<ul style="list-style-type: none"> <li>0</li> <li>1</li> <li>2</li> <li>\$false</li> <li>\$true</li> </ul>
---	---	--

**Answer:**

**Answer Area**

▼	▼	▼
Set-TransportAgent Set-TransportConfig Set-TransportRule Set-TransportServer Set-TransportService	-RejectMessageOnShadowFailure   -SafetyNetHoldTime -ShadowMessageAutoDiscardInterval -ShadowRedundancyEnabled -TransportSyncEnabled	0 1 2 \$false \$true