

Microsoft

Exam 70-489

Developing Microsoft SharePoint Server 2013 Advanced Solutions

Version: Demo

[Total Questions: 10]

Topic break down

Topic	No. of Questions
Topic 1: Trey Research	4
Topic 2: Lucerne Publishing	1
Topic 3: Contoso Ltd	2
Topic 5: Mix Questions	3

Topic 1, Trey Research

Background

You develop an intranet portal for Trey Research. End users of the portal are researchers and office staff.

Business Requirements

All end users must be able to customize their profile with relevant information. Researchers must store research papers, upload supporting documents, and search content.

Storage

The portal must use an existing Microsoft SQL Server database to access and store work profile information and research papers.

Data Access

- ✍ The portal must use Business Connectivity Services (BCS) to access data from external systems.
- ✍ Researchers must search content from SharePoint and external systems.
- ✍ Researchers must manage a research topic and related content as a single entity.

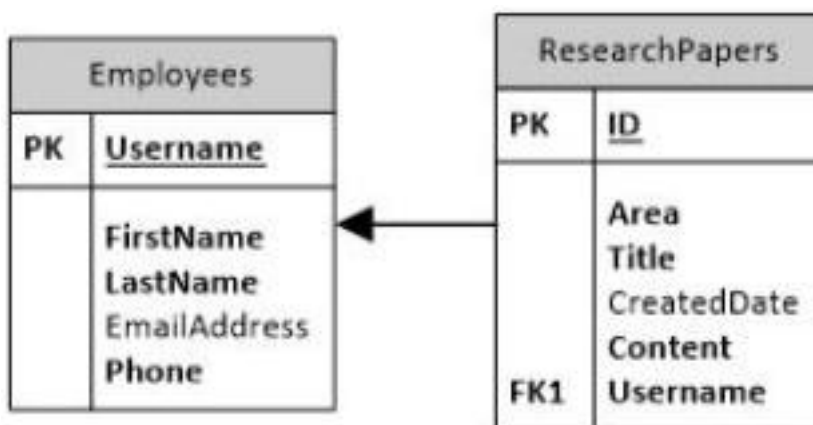
User Profile

- ✍ Employees must be able to customize their profile.
- ✍ Administrators must be able to create new profile properties.

Technical Requirements

Data Store

The data model for the database entities is shown below:



Users must not be allowed to update the Employees.Username and ResearchPapers.ID fields. The fields uniquely distinguish the corresponding entity.

Access External Data

- ✍ You must create an external content type named TreyResearch to access the SQL data source. During development, the data source will be accessible locally.

- ✍ You must develop an app to access the fields named Employee Name and Research Paper Title.
- ✍ Researchers must be able to find all research papers that are written by a particular employee.
- ✍ A research paper always must be associated with the employee that wrote it.

Document Management

- ✍ Researchers must be able to upload research papers and relevant supporting materials into a document set named Research Content.
- ✍ All the document sets must be stored in a list named ResearchPapers.
- ✍ All documents that are uploaded must contain the prefix DOC in the file name.

Environment

The SQL database will be on a different physical server when the solution is deployed to a production environment. The solution must use the SQL Server user named sqltrey to connect to the database. The BCS service is configured and running in the production environment.

Personalize

- ✍ You must use custom profile properties to add a new section to the user profile properties page.
- ✍ The solution must use the client-side object model (CSOM) to upload employee profile pictures.
- ✍ Employees must be able to change their display name on the site.
- ✍ Each employee's page must display the value of the DisplayName and Title fields.

Search

- ✍ The Microsoft Bing API web service must be used to search for research papers. No code must be written.
- ✍ The app must use a Content Enrichment web service named AbstractIndexer. The app must use the AbstractIndexer service to index search content.
- ✍ The solution must store large-sized media files in a dedicated SQL Server database.
- ✍ The database must use the ResearchPapers.ID field as the foreign key to associate the field with the TreyResearch external content type.

Application Structure

Relevant portions of the solution files are shown below. (Line numbers in the code segments are included for reference only and include a two-character prefix that denotes the specific file to which they belong.)

App.js

```
AJ01 var context;
AJ02 var web;
AJ03 var user;
AJ04
AJ05
AJ06 $.ajax({
AJ07     url: listURL,
AJ08     headers: {
AJ09         "accept": "application/json",
AJ10         "X-RequestDigest": $("#__REQUESTDIGEST").val()
AJ11     },
AJ12     success: this.showItems,
AJ13     error: this.failMethod
AJ14 });
AJ15 }
AJ16
AJ17 this.showItems = function (data) {
AJ18     $("#Container").children().remove();
AJ19     $.each(data.d.results, function (key, val) {
AJ20         var item = $("#EmployeeInfoTemplate").clone()
AJ21             .attr("id", val.BdcIdentity)
AJ22             .fadeIn("slow");
AJ23         ...
AJ24         item.appendTo("#Container");
AJ25     });
AJ26 }
AJ27
AJ28 this.failMethod = function (jqXHR, textStatus, errorThrown) {
AJ29     alert('failed: ' + errorThrown);
AJ30 }
AJ31 }
AJ32 ExecuteOrDelayUntilScriptLoaded(getEmployees, "sp.js");
AJ33 });
AJ34
AJ35 function getEmployees() {
AJ36     var grid = new AppLevelECT.Grid
AJ37     ("ColumnContainer", 3, _spPageContextInfo.webServerRelativeUrl);
AJ37     grid.init();
AJ38 }
```

ManageUserProfiles.es

```

MP01 namespace ManageUserProfiles
MP02 {
MP03     class ProfileProperties
MP04     {
MP05         public static void AddProfileProperty(string name, string displayName,
bool isMultivalued)
MP06         {
MP07             using (SPSite site = new SPSite("http://treyresearch.com/users"))
MP08             {
MP09                 SPServiceContext svcContext = SPServiceContext.GetContext(site);
MP10                 try
MP11                 {
MP12                     ProfilePropertyManager prfPropMgr;
MP13                     ProfileSubtypeManager prfTypeMgr;
MP14                     ProfileSubtypePropertyManager prftypePropMgr;
MP15                     ProfileTypePropertyManager typPropMgr;
MP16                     ProfileSubtypeProperty prfTypeProp;
MP17                     ProfileTypeProperty prfProp;
MP18                     ProfileSubtype prfType;
MP19                     CorePropertyManager corePropMgr;
MP20                     CoreProperty coreProp;
MP21                     prfPropMgr = new UserProfileConfigManager(svcContext)
. ProfilePropertyManager;

MP22
MP23                     prfTypeProp = prftypePropMgr.Create(prfProp);
MP24                     prfTypeProp.IsUserEditable = true;
MP25                     prfTypeProp.DefaultPrivacy = Privacy.Public;
MP26                     prfTypeProp.UserOverridePrivacy = true;
MP27                     prftypePropMgr.Add(prfTypeProp);
MP28                 }
MP29                 catch (System.Exception e)
MP30                 {
MP31                     throw new Exception("Error occurred: " + e.ToString());
MP32                 }
MP33             }
MP34         }
MP35     }
MP36 }
MP37
MP38
MP39
MP40 public void UploadPicture(string account, string picURL)
MP41 {
MP42     try
MP43     {
MP44
MP45     }
MP46     catch (Exception e)
MP47     {
MP48         throw new Exception("Error occurred: " + e.ToString());
MP49     }
MP50 }
MP51
MP52 public UserProfileProperties GetUserProfileProperties(string account)
MP53 {
MP54     var userprfProps = new UserProfileProperties();
MP55
MP56     var clientContext = new ClientContext("http://treyresearch.com/users");

```

ContentManagement.es

```

CM01 private void CreateDocumentSets()
CM02 {
CM03     using (SPSite site = new SPSite("http://treyresearch.com/sites"))
CM04     {
CM05         using (SPWeb web = site.RootWeb)
CM06         {
CM07
CM08         }
CM09     }
CM10 }

```

Question No : 1 HOTSPOT - (Topic 1)

You need to create the external content type to support the data model.

In the Return Parameter Configuration dialog box, in the properties section, which options should you select? (To answer, select the appropriate setting or settings in the answer area.)

Properties	
Data Source Element:	Username
.NET Type:	System.String
Map to Identifier:	<input checked="" type="checkbox"/>
Identifier:	<input type="text" value="Username"/>
Field:	<input type="text" value="Username"/>
Display Name:	<input type="text" value="Username"/>
Foreign Identifier:	(Click to Add)
Required:	<input type="checkbox"/>
Read-Only:	<input type="checkbox"/>
Office Property:	<input type="text" value="Unmapped"/>
Show In Picker:	<input type="checkbox"/>
Timestamp Field:	<input type="checkbox"/>

Answer:

Properties

Data Source Element:	Username
.NET Type:	System.String
Map to Identifier:	<input checked="" type="checkbox"/>
Identifier:	<input type="text" value="Username"/>
Field:	<input type="text" value="Username"/>
Display Name:	<input type="text" value="Username"/>
Foreign Identifier:	(Click to Add)
Required:	<input type="checkbox"/>
Read-Only:	<input type="checkbox"/>
Office Property:	<input type="text" value="Unmapped"/>
Show In Picker:	<input type="checkbox"/>
Timestamp Field:	<input type="checkbox"/>

Explanation:

Properties	
Data Source Element:	Username
.NET Type:	System.String
Map to Identifier:	<input checked="" type="checkbox"/>
Identifier:	Username
Field:	Username
Display Name:	Username
Foreign Identifier:	(Click to Add)
Required:	<input type="checkbox"/>
Read-Only:	<input type="checkbox"/>
Office Property:	Unmapped
Show In Picker:	<input type="checkbox"/>
Timestamp Field:	<input type="checkbox"/>

From scenario:

You must create an external content type named TreyResearch to access the SQL data source. During development, the data source will be accessible locally.

Question No : 2 - (Topic 1)

You need to generate document identifiers for each new document that is uploaded to the site.

What should you do?

- A.** Create a derived class that inherits from the abstract class named Microsoft.Office.DocumentManagement.DocumentId and then override all of the abstract methods.
- B.** Create a derived class that inherits from the abstract class named Microsoft.Office.DocumentManagement.DocumentIdProvider and then override all of the virtual members.
- C.** Create a derived class that inherits from the Microsoft.Office.DocumentManagement.DocumentIdProvider abstract class and then implement all abstract members.
- D.** Create a class to implement the Microsoft.Office.DocumentManagement.IDocumentId interface and then override all of the virtual members.

Answer: B

Question No : 3 - (Topic 1)

You need to configure the Content Enrichment web service to index content from the AbstractIndexer service.

What should you do?

- A.** Set the value of the OutputProperties array to Trigger=True.
- B.** Set the value of the SendRawData property to false.
- C.** Configure conditions for the Trigger property.
- D.** Set the value of the InputProperties property to Trigger=True.

Answer: A

Question No : 4 - (Topic 1)

You need to search for research papers that contain media files.

What should you do? {Each correct answer presents part of the solution. Choose all that apply.)

- A.** Add an Association operation from the ResearchPapers.ID field to the Windows Media Service.
- B.** Use Remote BLOB storage.
- C.** Add an Association operation from the ResearchPapers.ID field to the TreyResearch

external content type.

D. Create a SQL Server-based external content type.

Answer: B,D

Topic 2, Lucerne Publishing

Background

You are hired by Lucerne Publishing to design and implement a new public-facing Internet site by using SharePoint. Lucerne Publishing also needs an intranet site to host sensitive documents and content.

Business Requirements

Internet

- ✍ Content owners must be able to:
- ✍ Modify content in pages that are published for anonymous site visitors.
- ✍ Modify search engine optimization (SEO) properties to optimize visibility of the web site.
- ✍ Create content in multiple languages and use automatic translation.

Intranet

- ✍ Each department must have its own site. Each department home page must display relevant information about the department and contact information for employees.
- ✍ Each user is encouraged to create their own blog, on which they will publish information about current projects and get feedback from other users in the company.
- ✍ Personalized content must be displayed for an employee when an employee accesses the intranet. The page must include a feed that displays updates from other users' blog posts.

Technical Requirements

Service Applications

- ✍ The Internet and intranet web applications must use the Managed Metadata Service (MMS). Both web applications use a separate MMS service application and do not share term sets.
- ✍ The intranet web application uses the User Profile Service Application (UPA).
- ✍ The intranet uses all available social features of the UPA.

Users follow, mention, and identify documents and people. Users often discuss news by using hash tags. You must develop an app part that allows the current user to show different top feeds from user profiles.

Hardware

The hardware that hosts the Internet site must handle thousands of concurrent users.

URLs

The following table lists the URLs that the SharePoint sites will use.

Site	URL
Public-facing Internet site	http://www.lucernepublishing.com
Intranet	http://intranet.lucernepublishing.com
My Sites	http://my.lucernepublishing.com

Search Engine Optimization (SEO)

- ✍ You must implement search engine optimization for the public-facing Internet site. SharePoint must produce a site map file.
- ✍ You must publish data from the intranet site to the Internet web site by using cross-site publishing. You must define a catalog, add the data, and publish it to the Internet site.
- ✍ You must create a custom tool that site collection administrators use to manage catalog connections.
- ✍ You must define the API calls to remove or update existing catalog connections.

Filtering

You must enable canonical URL filtering to improve ranking by Internet search engines.

The Internet site that must use canonical filtering has the following URL:

http://www.lucernepublishing.com/products/pages/products.aspx? productID=<num>&productCategory=<category>

You must define the filters that the site collection administrator uses.

Internet

You publish the Internet site for multiple device types, such as mobile phones and tablet devices. The solution uses multiple master pages. Device channels select the master page to display based upon the capabilities of the device that connects to the site.

The following table lists the device channels and master pages that the site uses.

Master page	Device channels
Phone	Three device channels use the Phone master page, including one called Windows Phone that has an alias named WinPhone.
Tablet	There are two device channels that use the Tablet master page.
Default	Any device that is not included in other device channels uses a device channel named Default. The Default channel uses the Default master page.

You create a Windows Phone app. When users access the site by using a Windows phone, a message must appear on every page of the mobile site. The message must notify users

that they can download the Windows Phone app to their phone. The HTML that contains the message must render only to the Windows phones.

Intranet

- ✍ Each department must have its own site collection.
- ✍ Each employee must have Reader permissions to their department site collection.
- ✍ Employees access the intranet site by using a wide variety of devices.
- ✍ Some employees report that the home page loads slowly. You investigate the issue and find out that the size of some images is very large. You must enable image renditions on the intranet site collection.
- ✍ You must develop an app part that displays information from the users' personal sites and news feeds.

Custom Development

- ✍ You design an application framework. The framework is used by other developers on the team. The framework must include entry points that are used to log errors and exceptions. You need the entry points.
- ✍ You create a custom Visual Web Part in a solution package. You deploy the solution package as a farm solution by using Windows PowerShell. An error message that includes a correlation ID displays when you add the custom Visual Web Part to a SharePoint site.
- ✍ You must create a tool to maintain social links. The tool must:
- ✍ You develop a Windows Store app that synchronizes data between the intranet sites and the app to allow users to work offline.

Performance Improvement

- ✍ You have not modified the Request Management configuration.
- ✍ You must implement caching in your custom code to improve the performance of the company's intranet site.
- ✍ The SharePoint front-end web servers are load-balanced. Each request within a user session can be processed by different front-end web servers.
- ✍ Objects that are cached must always be available, regardless of which front-end web server processes the request.
- ✍ You must monitor the amount of memory that is available and the number of current requests for each server.

Question No : 5 - (Topic 2)

You need to implement connection management for catalog connections.

Which method should you use? (Each correct answer presents part of the solution. Choose all that apply.)

A. Public void UpdateCatalogConnection(CatalogConnectionSettingscatalogInfo)

- B. Public void OnPublishCatalog(string catalogPath)
- C. Public void DeleteCatalogConnection(string catalogPath)
- D. Public void SetCatalogConnection(string catalogPath, bool disconnect)

Answer: A,C

Explanation: From scenario:

You must create a custom tool that site collection administrators use to manage catalog connections.

You must define the API calls to remove (C) or update (A) existing catalog connections.

Topic 3, Contoso Ltd

Background

Contoso Ltd. is a global real estate company. You are hired to replace the company's existing ASP.NET website at <http://www.contoso.com> with a new SharePoint 2013 public-facing website. The site will display data about the company and information about residential properties that the individual agents in the company are selling. You have SharePoint Server environments for development, staging, and production.

Search

The website has the following requirements:

- ✍ Site visitors must be able to search for documents that are located anywhere on the site.
- ✍ When site visitors search for real estate properties, they must see information about a property.
- ✍ When a visitor searches for the word Guidelines, a PDF document named Real Estate Guidelines must appear at the top of the search results.

Search Engine Optimization

The company wants to ensure that the website displays prominently in Internet search results when people search for real estate.

The website has the following requirements:

- ✍ Internet search engines must properly rank pages so that the more popular pages on the site appear first in the Internet search engine results.
- ✍ SharePoint must generate the sitemap.xml and robots.txt files that are used by Internet search engines.

When an Internet search engine crawls the site, the search engine must recognize that the following URLs display information about different agents:

- ✍ <http://www.contoso.com/FindAnAgent?agentName=JohnDoe&officeId = Sacramento>
- ✍ <http://www.contoso.com/FindAnAgent?agentName=JohnDoe&officeId = Houston>

The search engine must recognize that the following URLs display the same information about the same agent:

- ✍ <http://www.contoso.com/FindAnAgent?agentName=JohnDoe&officeId=Sacramento>
- ✍ <http://www.contoso.com/FindAnAgent?agentName=JohnDoe&officeId = Sacramento&icerts=true>

Managed Metadata Service (MMS)

The MMS must include three term sets named Offices, Cities, and Features.

Offices Term Set

The Offices term set has the following requirements:

- ✍ The Offices term set must be a child of the group named Navigation.
- ✍ The Offices term set must be configured to use friendly URLs in the Offices sub-site.
- ✍ The name for each new office must be added to the Offices term set programmatically.
- ✍ The left navigation pane for the Offices page on the website must use the terms in the Offices term set.
- ✍ When the company opens a new office, a link for each new office must display in the left navigation pane.

Cities Term Set

The Cities term set has the following requirements:

- ✍ The Cities term set must contain a list that contains the names of major metropolitan areas.
- ✍ Many of the cities that are included in the Offices term set may also appear in the Cities term set, but the term sets may not be identical.
- ✍ If a city is required in both term sets, it must first be added to the Offices term set before it can be added to the Cities term set.
- ✍ If a term is changed in the Offices term set, it must automatically change in the Cities term set.
- ✍ The term Dallas must have a term ID of {b6ell481-3445-413c-9da0-b15ae5d5cbd4}.

Features Term Set

You have an Excel file that contains a list of possible features for each property. The Features term set has the following requirements:

- ✍ The Features term set must contain the terms that describe details about each property, such as whether the building is a single family house or a condominium.
- ✍ The list of possible features must be programmatically imported from the Excel file into the term store in each server environment.

Web Application

The Internet Information Services (IIS) website contains a folder named `_ConfigurationFiles`. The web application has the following requirements:

- ✍ Anonymous access must be enabled on the web application.
- ✍ Internet search engines must index the site.
- ✍ Internet search engines must not index the files in the `_ConfigurationFiles` folder.

Site Collections and Content

The web application includes the following three site collections.

Board Member Site Collection

The Board Member site collection is only accessible to the board members so that they can view private company information.

The Board Member site collection has the following requirements:

- ✍ Only board members can log in to the site collection.
- ✍ A page within the site collection must display a list of all the board members.
- ✍ The website must be located at <http://www.contoso.com/sites/board>.

Internet Site Collection

Anonymous access is enabled on the Internet site collection. The Internet site collection has the following requirements:

- ✍ The site collection must include a sub-site named Offices.
- ✍ The URL of the Offices sub-site is <http://www.contoso.com/Offices>.
- ✍ Each office must have its own page on the site.
- ✍ The pages for each office must have the same style and structure.
- ✍ Each office page must contain a Content Search Web Part that displays a listing of all the properties that are being sold by agents in the office.
- ✍ The Content Search Web Part must use a custom display template named Real Estate Property to render search results when site visitors search for a property.
- ✍ The target page for terms in the Office term set must point to a page named Office.aspx that is in the Pages library of the Offices sub-site.
- ✍ The site must contain an About Us section that contains a Content Search Web Part that lists the members of the board of directors for the company.
- ✍ Each member of the board must have a page that contains biographical information about that board member.
- ✍ The list of board members must be available in the Board Member site collection.
- ✍ Site visitors must be able to view information about individual agents, including their contact information, certifications, and picture.
- ✍ When agents visit the Internet site collection, the agents may add information about each of the real estate properties that they are selling.
- ✍ The agents must be able to tag real estate properties according to their features.
- ✍ Real estate agents must enter real estate property information into a web form that is used specifically for data collection.

The web form must collect the following information:

- ✍ The property address.
- ✍ Up to five pictures of the property.
- ✍ The selling price.
- ✍ The number of bedrooms and bathrooms.
- ✍ The name of the real estate agent.
- ✍ Tags that will further describe the property.

Agent Site Collection

The Agent site collection is in the same web application and is accessible only to agents. The Agent site collection has the following requirements:

- ✍ The site collection must include a site that contains instructions for real estate agents that tells them how to add property information to the website.
- ✍ The website must be located at <http://www.contoso.com/sites/agents>.
- ✍ A Web Part must use the .NET client-side object model (CSOM) to retrieve all of the terms from only the Features term set.

Page Layouts and Web Parts

Page Layouts

You must create the following page layouts: About Us, Biography With Image, Biography No Image, and Office.

The page layouts have the following requirements:

- ✍ The About Us page layout must include a field to which the user may add Web Parts.
- ✍ The Biography With Image and Biography No Image page layouts must display biographical information about the board of directors.
- ✍ You must create a content type named Biography. Biography With Image and Biography No Image page layouts must use the Biography content type.
- ✍ The Office page layout must display information for each office and must use the fields that that are defined in the Elements.xml file.

Web Parts

The Agent Web Part has the following requirements:

- ✍ The Web Part must display information about an individual agent.
- ✍ The Web Part must display information that is based on query string parameters.
- ✍ The URL of the page that hosts the Web Part must be <http://www.contoso.com/FindAnAgent>.

The following table lists the query string parameters and the way that each parameter must be used by the Web Part.

Parameter name	Parameter description	Required
agentName	The agent's name. When used in conjunction with the officeId parameter, the agentName parameter is used by the Web Part to determine which agent's name to display.	Yes
officeId	The unique identification number of the office to which the agent belongs. When used in conjunction with the agentName parameter, the officeId is used by the Web Part to determine which agent's information to display.	Yes
certs	A Boolean that indicates whether or not the agent's certifications should display.	No

Application Structure

Relevant portions of the markup and code for the solution are shown below. (Line numbers

in the code segments are included for reference only and include a two-character prefix that denotes the specific file to which they belong.)

Elements.xml

```
EL01 <Field
  ID="{dcdfd660-0d71-47b4-89a6-9a6deba6657b}"
  Name="SiteColumn1"
  DisplayName="Site Column 1"
  Type="HTML"
  RichText="TRUE"
  RichTextMode="FullHTML"
  Group="Custom Columns"/>
EL02 <Field
  ID="{15468e57-ea01-4077-b074-d323ea98cb94}"
  Name="SiteColumn2"
  DisplayName="Site Column 2"
  Type="Note"
  RichText="TRUE"
  RichTextMode="FullHTML"
  Group="Custom Columns"/>
```

FeaturesTermSet.es

```
FE01 ClientContext clientContext =
  new ClientContext("http://www.contoso.com");
FE02 TaxonomySession taxonomySession =
  TaxonomySession.GetTaxonomySession(clientContext);
FE03 TermStore termStore =
  taxonomySession.GetDefaultSiteCollectionTermStore();
FE04
FE05 clientContext.ExecuteQuery();
```

Import.cs

```
IM01 StreamReader reader = File.OpenText("C:\\Import.xls");
IM02 using (SPSite site = new SPSite("http://www.contoso.com"))
IM03 {
IM04     TaxonomySession taxonomySession = new TaxonomySession(site);
IM05     TermStore termStore = taxonomySession.TermStores[0];
IM06     Group group = termStore.Groups[0];
IM07
IM08 }
```

Question No : 6 HOTSPOT - (Topic 3)

You need to configure search results to meet the requirements for the Real Estate Guidelines document.

On the Site Settings page in the top level site of the site collection, which link should you select? (To answer, select the appropriate link in the answer area.)

<p>Search</p> <ul style="list-style-type: none"> Result Sources Result Types Query Rules Schema Search Settings Searchable columns Search and offline availability Configuration Import Configuration Export 	<p>Site Collection Administration</p> <ul style="list-style-type: none"> Recycle bin Search Result Sources Search Result Types Search Query Rules Search Schema Search Settings Search Configuration Import Search Configuration Export Site collection features
-----------------------------------------------------------------------------------------------------------------------------------------------------------------------------------------------------------------------------------------------------------------------------------------------------	---------------------------------------------------------------------------------------------------------------------------------------------------------------------------------------------------------------------------------------------------------------------------------------------------------------------------------------------------------

Answer:

<p>Search</p> <ul style="list-style-type: none"> Result Sources Result Types Query Rules Schema Search Settings Searchable columns Search and offline availability Configuration Import Configuration Export 	<p>Site Collection Administration</p> <ul style="list-style-type: none"> Recycle bin Search Result Sources Search Result Types Search Query Rules Search Schema Search Settings Search Configuration Import Search Configuration Export Site collection features
-----------------------------------------------------------------------------------------------------------------------------------------------------------------------------------------------------------------------------------------------------------------------------------------------------	---------------------------------------------------------------------------------------------------------------------------------------------------------------------------------------------------------------------------------------------------------------------------------------------------------------------------------------------------------

Question No : 7 - (Topic 3)

You need to include the details of each property as managed metadata.

Which code segment should you add at line IM07?

- A.

```
bool allTermsAdded = false;
string errorMessage = string.Empty;
ImportManager manager = termStore.GetImportManager();
manager.ImportTermSet(group, reader, out allTermsAdded, out errorMessage);
```
- B.

```
bool allTermsAdded = false;
string errorMessage = string.Empty;
ImportManager manager = taxonomySession.GetImportManager();
manager.ImportTermSet(group, reader, out allTermsAdded, out errorMessage);
```
- C.

```
TermSet termSet = group.TermSets["Features"];
ImportManager manager = taxonomySession.GetImportManager();
manager.ImportTermSet(termSet, reader);
```
- D.

```
TermSet termSet = group.TermSets["Features"];
ImportManager manager = termStore.GetImportManager();
manager.ImportTermSet(termSet, reader);
```

- A. Option A
- B. Option B
- C. Option C
- D. Option D

Answer: D

Topic 5, Mix Questions

Question No : 8 DRAG DROP - (Topic 5)

You develop a SharePoint site by using the Team Site template. Users share large images by using the team site.

You need to configure the SharePoint site so that images render at a maximum size of 400px wide and 200px high.

Which three actions should you perform in sequence? (To answer, move the appropriate actions from the list of actions to the answer).

	Answer Area
Create an image rendition that is 400px wide and 200px high.	
Enable the binary large object (BLOB) cache in the web.config file for the site. Enable publishing features for the site collection.	
Disable the binary large object (BLOB) cache in the web.config file of the site. Enable publishing features for the site collection.	
Create a placeholder container that is 400px wide and 200px high in the master template.	
Choose the configured rendition each time a new image needs to be rendered.	

Answer:

	Answer Area
Create an image rendition that is 400px wide and 200px high.	Enable the binary large object (BLOB) cache in the web.config file for the site. Enable publishing features for the site collection.
Enable the binary large object (BLOB) cache in the web.config file for the site. Enable publishing features for the site collection.	Create an image rendition that is 400px wide and 200px high.
Disable the binary large object (BLOB) cache in the web.config file of the site. Enable publishing features for the site collection.	Choose the configured rendition each time a new image needs to be rendered.
Create a placeholder container that is 400px wide and 200px high in the master template.	
Choose the configured rendition each time a new image needs to be rendered.	

Explanation: Box 1:

Enable the binary large object (BLOB) cache in the web.config file for the site. Enable publishing features for the site collection.

Box 2:

Create an image rendition that is 400px wide and 200px high.

Box 3:

Choose the configured rendition each time a new image needs to be rendered.

Note:

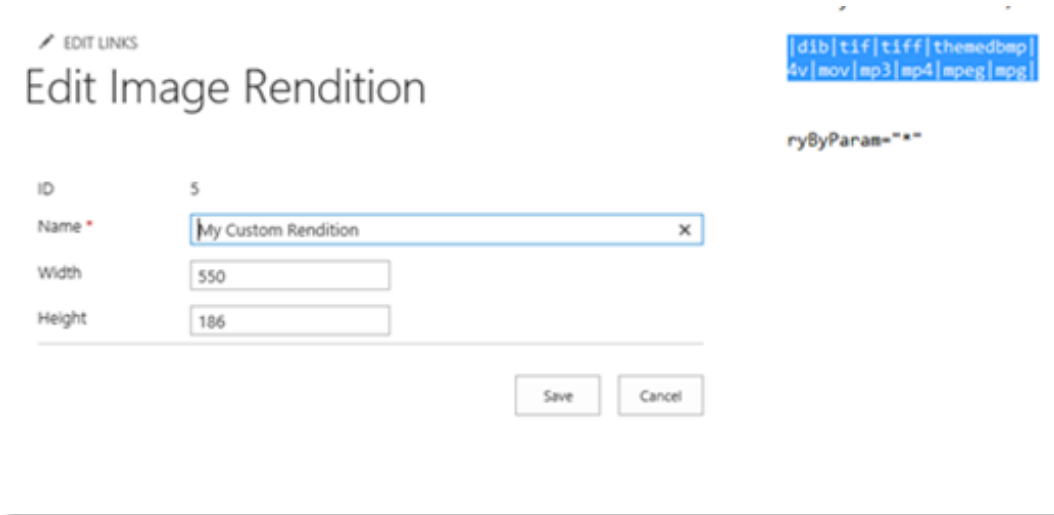
* (step 1) When using Image Rendition you will have to enable BLOBCache to improve performance. To enable BLOBCache:

Open Web.config file for the web application

Locate BLOBCache line and set enabled = "true"

Set the folder path to another folder or keep the default c:\BlobCache\14 folder.

* (step 2)



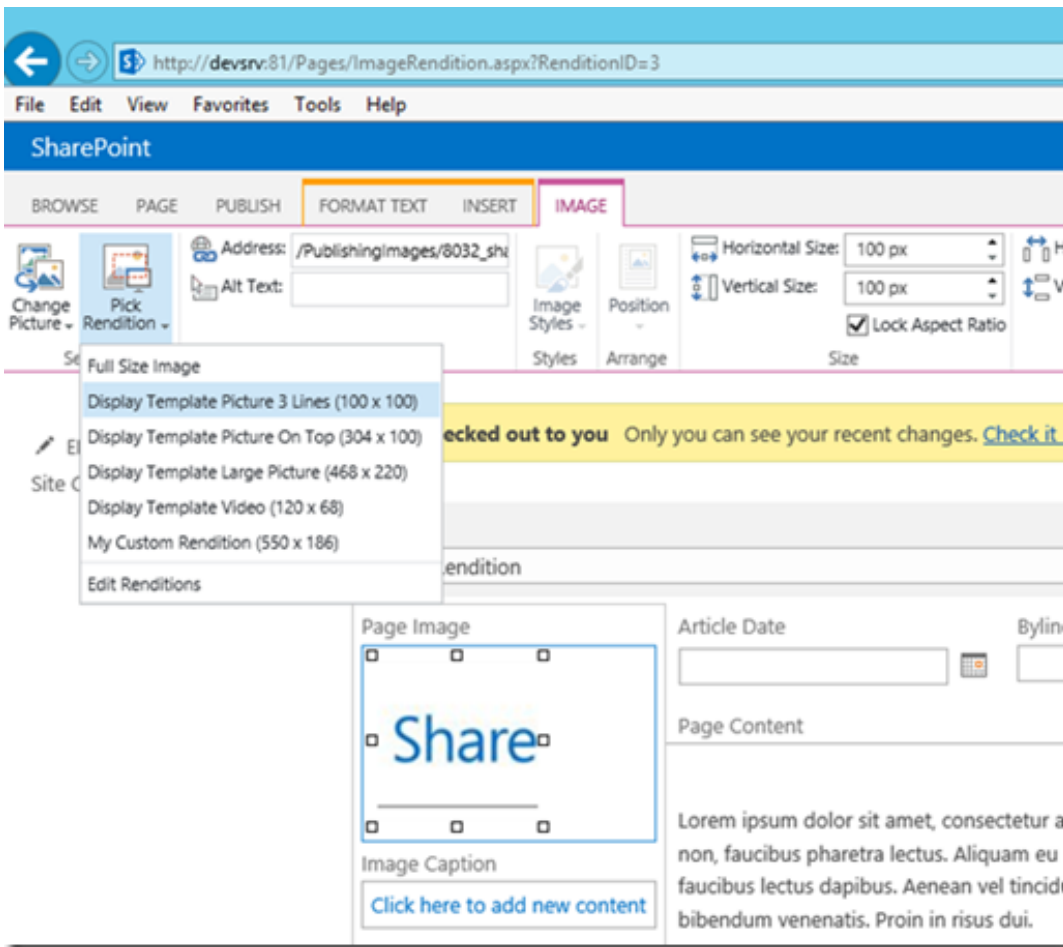
(step 3)

Edit the page and add an image to on the left

Select the image on the left

On the top bar, click on Image, Click on Pick Rendition.

Choose the required setting to show the image.



Question No : 9 - (Topic 5)

You create a site collection for Contoso, Ltd. by using the Community Site template. My Sites are configured. Users access the community site and view newsfeeds by clicking the Newsfeed link on the community site. You create a custom Web Part that displays the latest newsfeed posts for the user that is logged in.

The Web Part must use Representational State Transfer (REST) to retrieve items from the Newsfeed.

You need to define the correct uniform resource locator (URL) to access items.

Which URL should you use?

- A. http://my.contoso.com/_api/search
- B. http://my.contoso.com/_api/SP.UserProfiles.PeopleManager
- C. http://community.contoso.com/_api/web/lists/microfeed
- D. http://my.contoso.com/_api/social.feed/my/Feed

Answer: D

Explanation: The my resource represents the current user. When used inline in the endpoint URI, it sets the context of the request to the current user. For example, http://contoso.com/_api/social.feed/my/news gets the newsfeed for the current user.




Reference: Social feed REST API reference for SharePoint 2013

Question No : 10 HOTSPOT - (Topic 5)

You create a SharePoint app that displays a list of documents for a company that sells insurance policies. The documents have been crawled by the Search service.

You create managed properties named Underwriter and Bonded.

You must locate the documents that meet the following criteria:

-  Created by using Microsoft Word 2002
-  Contains the exact phrase "life policy"
-  Were underwritten by Woodgrove

You need to design a search query that locates the required documents.

How should you complete the relevant code? (To answer, select the appropriate code segment from each drop-down list in the answer area.)

```
function executeQuery() {  
  
    var queryTerms = "   "  
  
    queryTerms += "  write<10/01/2012";  
}
```



```
function executeQuery() {

var queryTerms = "   "
                    |pol*| |company:Woodgrove|
                    |life| |underwriter:'Woodgrove'|
                    |\"life policy\"| |underwriter=Woodgrove|
                    |'life insurance'|

queryTerms += "  write<10/01/2012";
                |filetype:docx|
                |fileextension:doc|
                |filetype:pdf|
                |fileextension:txt|

```

Answer:

```
function executeQuery() {

var queryTerms = "   "
                    |pol*| |company:Woodgrove|
                    |life| |underwriter:'Woodgrove'|
                    |\"life policy\"| |underwriter=Woodgrove|
                    |'life insurance'|

queryTerms += "  write<10/01/2012";
                |filetype:docx|
                |fileextension:doc|
                |filetype:pdf|
                |fileextension:txt|

```