

# **Avaya**

## **Exam 7591X**

### **Avaya Mobility Networking Solutions Integration Exam**

**Verson: Demo**

**[ Total Questions: 10 ]**

**Question No : 1**

Avaya Identity Engines has access policy rules to authenticate and give network access to the users.

Where are the guest users located and stored?

- A. Active Directory
- B. Directories
- C. Internal store
- D. Dashboard database

**Answer: A**

**Explanation:**

Reference [https://downloads.avaya.com/css/P8/documents/100179194\(P.14\)](https://downloads.avaya.com/css/P8/documents/100179194(P.14))

**Question No : 2**

Which WAP CLI command checks whether the WAP configuration satisfies PCI DSS wireless requirements?

- A. PCI-INFO
- B. PCI-TECH
- C. PCI-AUDIT
- D. PCI-DATA

**Answer: C**

**Explanation:**

Reference [https://www.scribd.com/document/332759174/101006149\(P.518\)](https://www.scribd.com/document/332759174/101006149(P.518))

**Question No : 3**

How many network interfaces does the IDE Guest Tunneling Server have?

- A. 6
- B. 5
- C. 4
- D. 3

**Answer: D**

**Question No : 4**

To allow Guest Manager and the Ignition Server to communicate, the SOAP settings must be configured in the Ignition Server.

What are the four configuration parameters needed for the SOAP configuration? (Choose four.)

- A. Ignition Server IP address
- B. Host name of Ignition Server
- C. Session timeout
- D. The TCP port number
- E. The bound interface
- F. The SOAP username/password

**Answer: C,D,E,F**

**Explanation:**

Reference [https://downloads.avaya.com/css/P8/documents/100122707\(p.35\)](https://downloads.avaya.com/css/P8/documents/100122707(p.35))

**Question No : 5**

Which encryption mechanism is mandatory for WPA2 implementation on 802.11n and 802.11ac?

- A. TKIP

- B. SHA
- C. AES
- D. MDS

**Answer: A**

**Explanation:**

Reference [https://forums.networkinfrastructure.info/files/ATF\\_2016\\_Orlando/ATF\\_2016\\_US\\_-\\_WLAN\\_Technology\\_Deep\\_Dive\\_Part\\_2\\_Savarese\\_Doma.pdf](https://forums.networkinfrastructure.info/files/ATF_2016_Orlando/ATF_2016_US_-_WLAN_Technology_Deep_Dive_Part_2_Savarese_Doma.pdf)

**Question No : 6**



Refer to the exhibit.

A customer has installed Avaya Ignition Analytics to collect the report and data analysis from Ignition Server. During the installation they got the screen to enter the license key. They want to use this for a trial period of 30 days, and do not want to purchase a license.

What should the customer do to continue the installation?

- A. Enter the serial number of the Ignition Server.
- B. Enter the product registration number.
- C. Enter any 16-digit number to register.
- D. Purchase and enter the license key.

**Answer: C**

**Question No : 7**

Which channel width is supported by the channel provided in WLAN 9100 wave 2 products?

- A. 90-MHz to 180-MHz
- B. 50-MHz to 100-MHz
- C. 40-MHz to 80-MHz
- D. 20-MHz to 160-MHz

**Answer: D**

**Explanation:**

Reference [http://rrc.ru/upload/avaya/ethernet/WLAN\\_9100\\_Tech\\_Transfer\(May2016\).pptx](http://rrc.ru/upload/avaya/ethernet/WLAN_9100_Tech_Transfer(May2016).pptx)

**Question No : 8**

What is the minimum RAM required to setup an Avaya WLAN Orchestration System (WOS) version 8.2 Small deployment model?

- A. 4GB
- B. 8GB
- C. 16GB
- D. 32GB

**Answer: B**

**Explanation:**

Reference [https://downloads.avaya.com/css/P8/documents/101031982\(p.2\)](https://downloads.avaya.com/css/P8/documents/101031982(p.2))

**Question No : 9**

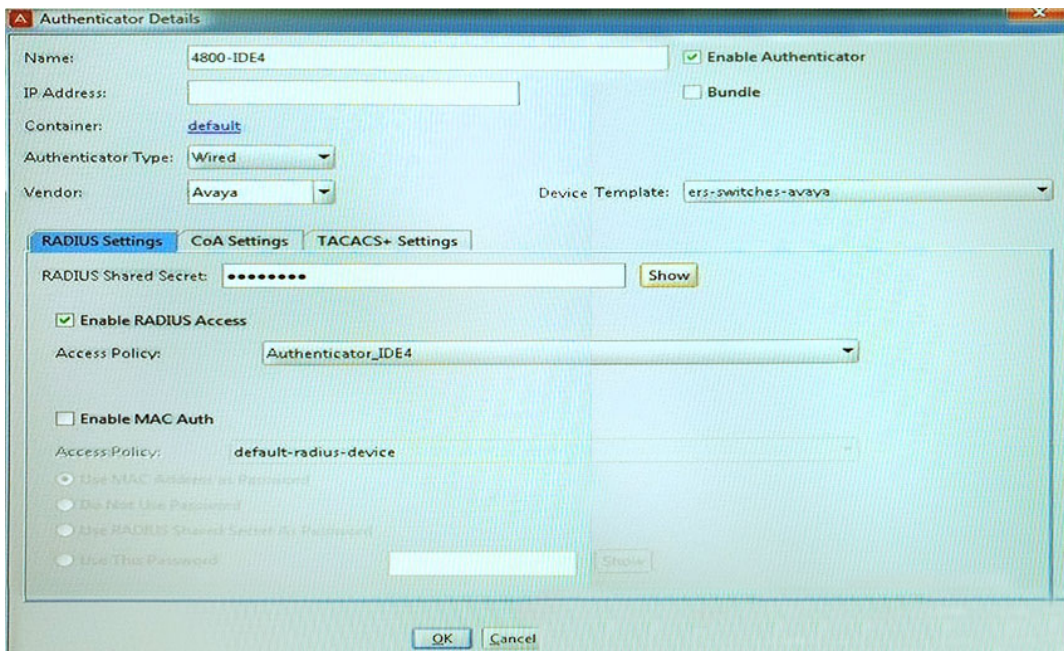
You are installing a large wireless LAN infrastructure with more than 250 Avaya wireless LAN 9100 Access Points.

Which on-premise Avaya Network Management tool would you implement?

- A. Configuration and Orchestration Manager (COM)
- B. Wireless Orchestration System (WOS)
- C. Visualization, Performance and Fault Manager (VPMF)
- D. Avaya Web Wireless Management Interface (WMI)

**Answer: B**

**Question No : 10**



Refer to the exhibit.

What is the main parameter used to validate authenticator(s)?

- A. Radius Shared Secret key

- B. Authenticator Type
- C. Device Template
- D. Access Policy

**Answer: A**