

# **SAP**

## **Exam C\_TSCM42\_66**

**SAP Certified Application Associate - Production - Planning &  
Manufacturing with SAP ERP 6.0 EHP6**

Verson: Demo

**[ Total Questions: 10 ]**

**Question No : 1**

What is SAP Solution Manager?

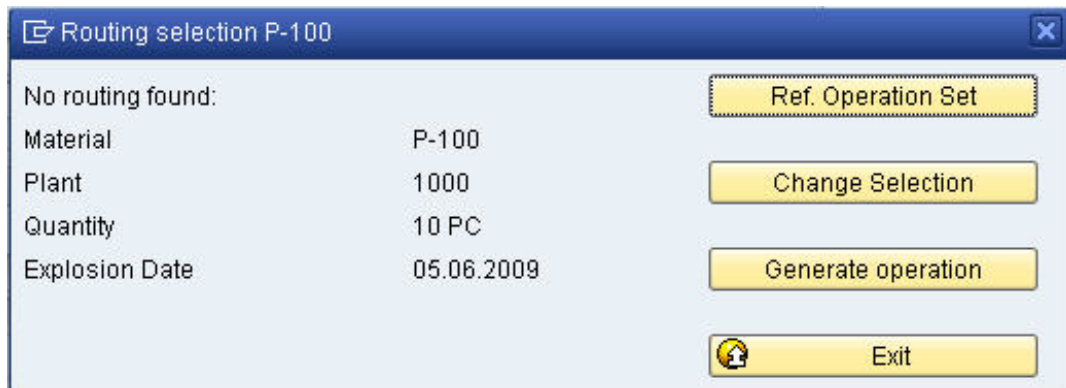
- A. A transaction in the SAP ECC system
- B. A standalone system that communicates with other systems in a system landscape
- C. An add-on industry solution
- D. A managed system in a system landscape

**Answer: B**

**Question No : 2**

In which scenario will the error message shown in the attached screenshot occur?

Exhibit:



Exhibit

- A. A valid routing exists, but the material master is set to manual routing selection.
- B. A valid routing exists, but the Customizing for the order type is set to manual routing selection.
- C. The routing is not valid at the explosion date.
- D. The selection method is set to "selection only by production version" in the material master.

**Answer: C**

**Question No : 3**

Which property applies for consumption with planning strategy 40 (planning with final assembly)?

- A. Consumption creates a static and binding assignment between the planned independent requirements and the customer requirements for the entire procurement process.
- B. Consumption takes place with the planning material.
- C. Consumption can reduce the total originally planned production quantity.
- D. Consumption can increase the total originally planned production quantity.

**Answer: D**

**Question No : 4**

Which of the following master data can be used with process orders?(Choose three)

- A. Serial numbers
- B. Master recipes
- C. Resources
- D. Production/resource tools
- E. Production versions

**Answer: B,C,E**

**Question No : 5**

Which types of objects can be changed with Engineering Change Management (ECM)?(Choose three)

- A. Task list
- B. Work center
- C. Production version
- D. Bill of material
- E. Material master

**Answer: A,D,E**

**Question No : 6**

In which master data object do you set the standard values for an operation?

- A. Material Master
- B. Work Center
- C. Routing
- D. Production Resource/Tool (PRT)

**Answer: C**

**Question No : 7**

What features related to process orders can be used to fulfill Good Manufacturing Practices (GMP) requirements?(Choose three)

- A. Approved master recipes
- B. Digital signature
- C. Electronic batch record
- D. Availability check
- E. Resource selection

**Answer: A,B,C**

**Question No : 8**

Which of the following properties applies to multi-site planning in SAP ECC?

- A. When using one-step stock transfer posting, transfer stock is created in the receiving plant.
- B. Multi-site planning can be activated using the corresponding planning strategy.
- C. Both withdrawal from an alternative plant and stock transfer from another plant are defined via special procurement keys.
- D. The use of "scope of planning" is always mandatory for multi-site planning.

**Answer: C**

**Question No : 9**

What could be a consequence of confirming an operation?

- A. The planned costs are updated
- B. The capacity requirements are updated
- C. The production order is rescheduled
- D. The actual costs are settled

**Answer: B**

**Question No : 10**

Which of the following activities is necessary for the capacity availability check that can be carried out automatically when a production order is released?

- A. Set the finite scheduling indicator and assign a checking rule in the work center for the operation to be checked.
- B. Activate the availability check and assign an overall profile in the checking control of the order type / plant combination.
- C. Assign an appropriate availability checking rule to the material master for the product.
- D. Activate the availability check and assign an overall profile in the production scheduling profile.

**Answer: B**