

EMC

Exam E20-532

networked storage-san specialist exam for storage admins

Verson: Demo

[Total Questions: 10]

Topic break down

Topic	No. of Questions
Topic 0: A	5
Topic 1: B	5

Topic 0, A

A

Question No : 1 DRAG DROP - (Topic 0)

Click the Task button.

Match the Performance Manager Historical Graph option with an analysis function.

Match the Performance Manager Historical Graph option with an analysis function.

Option	Analysis Function
(place here)	Calculate the probability that a particular rate will be realized.
(place here)	Analyze the statistical mean and standard deviation data for each device.
(place here)	Calculate a projected saturation date for a selected fabric, switch, or port according to the device's network traffic trends.

Answer:

Match the Performance Manager Historical Graph option with an analysis function.

Option	Analysis Function
Poisson Distribution	Calculate the probability that a particular rate will be realized.
Gaussian Distribution	Analyze the statistical mean and standard deviation data for each device.
Linear Regression	Calculate a projected saturation date for a selected fabric, switch, or port according to the device's network traffic trends.

Question No : 2 - (Topic 0)

Which Brocade CLI command prints entries of the nameserver?

- A. nsDisp
- B. nsShow
- C. showNS
- D. showNameServer

Answer: B

Question No : 3 - (Topic 0)

What are two [2] PowerPath modes of operation?

- A. active
- B. primary
- C. passive
- D. standby

Answer: A,D

Question No : 4 - (Topic 0)

Which two [2] statements describe port binding?

- A. Supported on M-series switches
- B. Supported on MDS-series switches
- C. Allows one to specify which port will be allowed access to a specified target
- D. Allows one to specify which WWN will be allowed access on a specified port

Answer: A,D

Question No : 5 - (Topic 0)

Which CLI command is used for Device Masking?

- A. fzone
- B. symcfg
- C. symmask
- D. symconfig

Answer: C

Topic 1, B

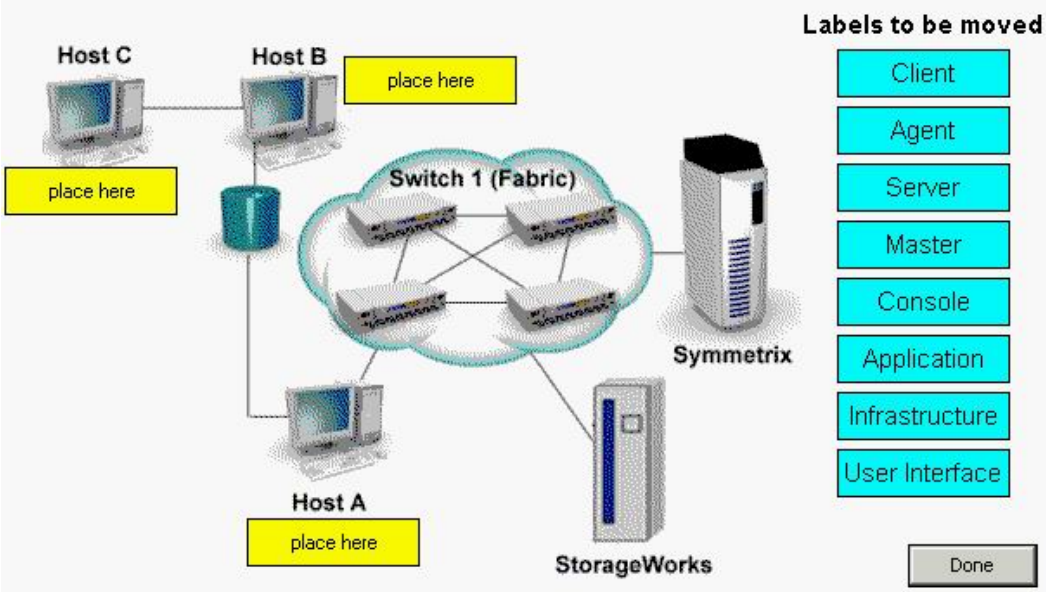
B

Question No : 6 DRAG DROP - (Topic 1)

Click the Task button.

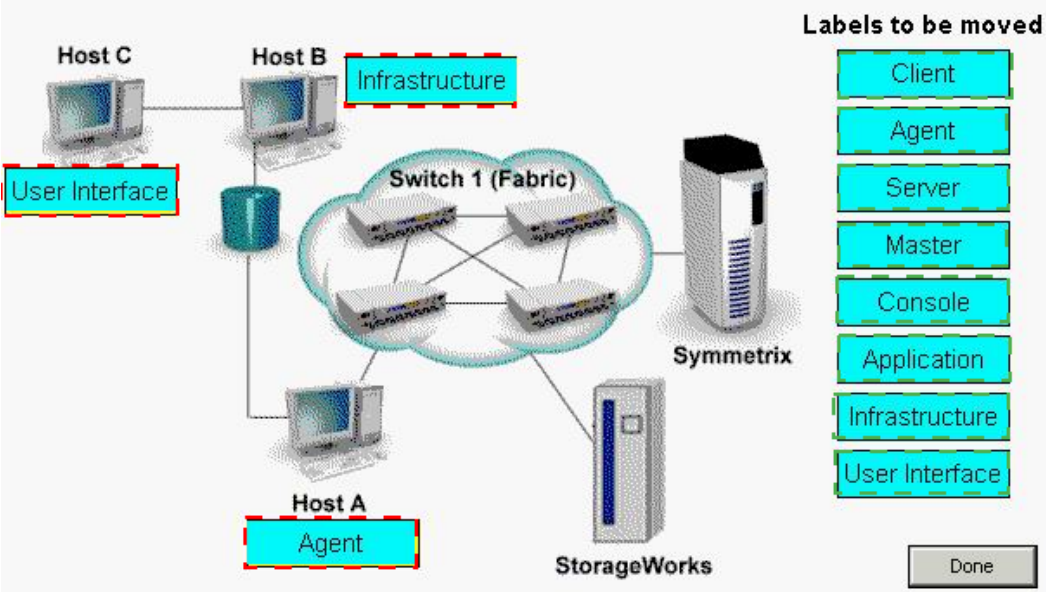
What are the three tiers for a single server EMC Control Center installation?

What are the three tiers for a single server EMC Control Center installation?
(Some labels may not be used.)



Answer:

What are the three tiers for a single server EMC Control Center installation?
(Some labels may not be used.)



Question No : 7 - (Topic 1)

How many buffer-to-buffer (BB) credits can be used per ASIC in a DS-32M2 switch?

- A. 30
- B. 32
- C. 60
- D. 64

Answer: C

Question No : 8 DRAG DROP - (Topic 1)

Click the Task button.

Match the units to their definitions.

Match the units to their definitions.

Term	Definition
(place here)	The number of ISLs a frame travels enroute to its destination
(place here)	Qualified maximum number of initiators that can access a single storage port through a SAN
(place here)	Number of nodes or ports that can contend for the bandwidth of an ISL
(place here)	Qualified maximum number of storage ports that can be accessed by a single initiator through a SAN
(place here)	The number of hops a frame travels enroute to a destination

Hop

Fan-in Ratio

Fan-Out Ratio

Oversubscription
Ratio

Done

Answer:

Match the units to their definitions.

Term	Definition
Hop	The number of ISLs a frame travels enroute to its destination
Fan-Out Ratio	Qualified maximum number of initiators that can access a single storage port through a SAN
Oversubscription Ratio	Number of nodes or ports that can contend for the bandwidth of an ISL
Fan-in Ratio	Qualified maximum number of storage ports that can be accessed by a single initiator through a SAN
(place here)	The number of hops a frame travels enroute to a destination

Question No : 9 DRAG DROP - (Topic 1)

Click the Task button.

Match the SAN port type to the device.

Match the SAN port type to the device. (Labels might be used more than once or not at all.)

The diagram shows a network topology with the following components and labels:

- CLARiiON**: A storage device with a "place here" label.
- Host**: A server connected to the CLARiiON device.
- Arbitrated Loop Tape**: A storage device with a "place here" label.
- Switches**: Two network switches with "place here" labels.
- Host**: A server connected to the switches.

Labels to be moved:

- A
- G
- N
- S
- GL
- NL
- ISL

Answer:

Match the SAN port type to the device. (Labels might be used more than once or not at all.)

The diagram illustrates a SAN configuration with the following components and connections:

- CLARiiON** storage array connected to a **Host** via a port labeled **NL**.
- CLARiiON** storage array connected to the left **Switch** via a port labeled **NL**.
- Left **Switch** connected to right **Switch** via a port labeled **NL**.
- Right **Switch** connected to a **Host** via a port labeled **NL**.
- Right **Switch** connected to **Arbitrated Loop Tape** drive via a port labeled **GL**.
- Arbitrated Loop Tape** drive connected to a **Host** via a port labeled **G**.

Labels to be moved:

- A
- G
- N
- S
- GL
- NL
- ISL

Done

Question No : 10 - (Topic 1)

With an extended fabric license, what is the maximum number of buffer-to-buffer (BB) credits that can be allocated to a port on a DS16-B2?

- A. 27
- B. 54
- C. 64
- D. 108

Answer: D