

EMC

Exam E20-542

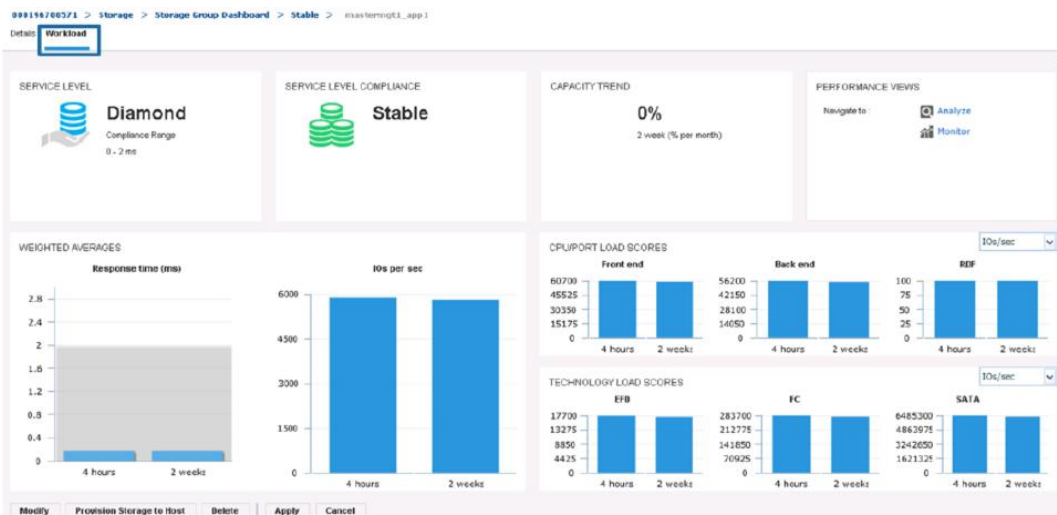
VMAX3 Solutions and Design Specialist Exam for Technology Architects

Verson: Demo

[Total Questions: 10]

Question No : 1

Refer to the Exhibit.



A storage administrator uses Unisphere for VMAX to review the workload for Storage Group mastermgmt_app1. How will storage be allocated for this Storage Group?

- A. On EFD drives only
- B. On EFD or FC 15K drives
- C. On EFD, FC 15K, and FC 10K drives
- D. On all drive types

Answer: A

Question No : 2

A new VMAX3 with eNAS was implemented at a manufacturing company. After storage has been provisioned to the Data Movers, which software is used for NAS management?

- A. Unisphere for VNX
- B. Unisphere for VMAX or Unisphere for VNX
- C. Unisphere for VMAX
- D. Solutions Enabler or Navisphere SecureCLI

Answer: A

Question No : 3

A storage administrator has completed TimeFinder SnapVX testing. The administrator is unable to terminate the TimeFinder SnapVX snapshot of the test Storage Group.

What advice should be provided to the administrator?

- A. Check for linked targets
- B. Change the "Time to Live" setting
- C. Confirm there is available Reserved Capacity
- D. Issue the terminate command against the individual LUNs

Answer: A

Question No : 4

A VMware administrator has been tasked with managing storage for an ESXi cluster connected to a VMAX3 array. The administrator is not familiar with Unisphere for VMAX and wants to use the VMware Web Client to provision RDM volumes to virtual machines.

Which EMC product provides this functionality?

- A. VSI Plug-in
- B. VASA
- C. PowerPath
- D. SYMCLI

Answer: A

Question No : 5

You are proposing a VMAX3 eNAS solution to a customer. The customer wants the eNAS system to be backed up to tape. Which I/O module will meet this requirement?

- A. 2-port 10GbE BaseT
- B. 2-port 10GbE Optical
- C. 4-port 8 Gb FC
- D. 4-port 16 Gb FC

Answer: C

Question No : 6

A storage administrator began taking nightly TimeFinder SnapVX snapshots of Oracle database LUNs 7 days ago. The administrator reports that the snapshots failed the previous night.

What advice should be provided to the administrator?

- A. Confirm there is available capacity in the Storage Resource Pool
- B. Update the Solutions Enabler database and re-run the snapshots
- C. Confirm the database was put in hot backup mode before the snapshot
- D. Link the last good snapshot to a target and restore the database LUNs

Answer: A

Question No : 7

A storage administrator wants to add new volumes to an existing VMAX3 Storage Group. The new volumes need to have a different SLO than the existing Storage Group.

What will happen when the new volumes are added to the existing VMAX3 Storage Group?

- A. New volumes will inherit the SRP and SLO set on the existing Storage Group.
- B. Job to add the new volumes to the existing Storage Group will fail.
- C. New volumes will retain the default SRP and SLO when they are added to the Storage Group.
- D. Job to add the new volumes will issue a warning and then add the new volumes to the Storage Group.

Answer: A

Question No : 8

Which types of authentication are supported by Unisphere for VMAX?

- A. Local Directory, Windows (local and domain-based), and LDAP
- B. Local Directory, Windows (local and domain-based), and RADIUS
- C. Local Directory, Windows (local and domain-based), and CHAP
- D. Local Directory, Windows (local and domain-based), and Secure Service Credential

Answer: C

Question No : 9

What is the maximum number of linked targets that TimeFinder SnapVX supports?

- A. 32
- B. 128
- C. 256
- D. 1024

Answer: D

Question No : 10

A VMAX3 Storage Group has Host I/O limits set at 10,000 IOPs. The Port Group contains four ports across different directors. The Dynamic Distribution is set to "Always".

What is the maximum IOPs the Storage Group can achieve in the event a switch port being used by one of the director ports fails but the director remains online?

- A. 5,000
- B. 7,500
- C. 9,000
- D. 10,000

Answer: D