

EMC

Exam E20-597

Backup Recovery - NetWorker Specialist Exam for Storage Administrators

Verson: Demo

[Total Questions: 10]

Topic break down

Topic	No. of Questions
Topic 1: Volume A	1
Topic 2: Volume B	7
Topic 3: Volume C	2

Topic 1, Volume A

Question No : 1 - (Topic 1)

A company is running an EMC NetWorker server on a UNIX platform and wants to monitor backup operations from the UNIX command line.

Which utility can be used?

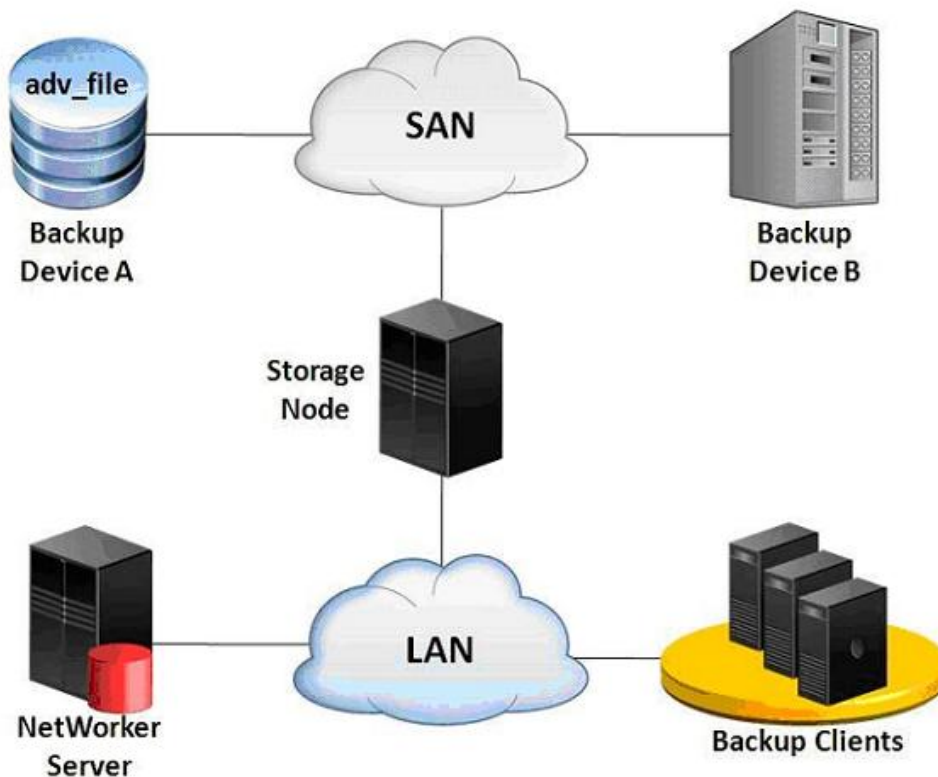
- A. nsrwatch
- B. nsradmin
- C. nsrinfo
- D. nsralist

Answer: A

Topic 2, Volume B

Question No : 2 - (Topic 2)

Refer to the exhibit.



A backup administrator configures an EMC NetWorker staging policy to move save sets from backup Device A to backup Device B. A restore session is started and requires save sets that were staged to Device B.

What is the data flow in this recovery?

- A. Data goes from Device B through the storage node and then to the client.
- B. Data is reconstructed from Device B to Device A through the storage node and then sent back to the client.
- C. Data goes from Device B through the storage node to the EMC NetWorker server and then to the client.
- D. Data is restored to the storage node and copied to the client.

Answer: A

Question No : 3 - (Topic 2)

A storage administrator wants to configure a virtual tape library device within EMC NetWorker. In addition, the administrator wants the backup data deduplicated.

Which other EMC product is required?

- A. Data Domain
- B. VPLEX
- C. RecoverPoint
- D. Avamar

Answer: A

Question No : 4 - (Topic 2)

After initiating a manual save, you receive the following error message:

What must you check to do a manual save?

- A. EMC NetWorker Server properties
- B. save syntax
- C. Run savegrp before run save

D. Modify client access list and grant access for all clients

Answer: A

Question No : 5 - (Topic 2)

Which policy in EMC NetWorker determines the length of time that records are retained within the Client File Index (CFI)?

- A. Browse
- B. Retention
- C. Snapshot
- D. Staging

Answer: A

Question No : 6 - (Topic 2)

An EMC NetWorker administrator must perform a recovery of data from a failed client to a new client. Which type of recovery should the administrator use?

- A. Directed
- B. Browsable
- C. Saveset
- D. Server Recovery

Answer: A

Question No : 7 - (Topic 2)

What is a benefit of performing DD Boost backups with EMC NetWorker Client Direct?

- A. Reduced network bandwidth usage
- B. Deduplication only occurs on the storage device
- C. Failed backup operations resume at a known good point
- D. Reduced frequency of performing full backups

Answer: A

Question No : 8 - (Topic 2)

What is the benefit of using the EMC NetWorker Client Direct feature?

- A. Reduced bandwidth usage
- B. Reduced CPU utilization on the client
- C. Reduced number of full backups
- D. Reduced client disk access

Answer: A

Topic 3, Volume C

Question No : 9 - (Topic 3)

A Dell EMC NetWorker backup is configured as a probe-based backup. What must be configured in the workflow for this backup?

- A. Backup and clone actions
- B. Probe action only
- C. Probe and backup actions
- D. Check Connectivity and probe actions

Answer: D

Explanation: References:

Question No : 10 DRAG DROP - (Topic 3)

What is recommended sequence to create a new Dell EMC NetWorker data protection policy?

Answer Area

- Create the workflow
- Add the protection group
- Create the action(s)
- Create the policy

- STEP 1
- STEP 2
- STEP 3
- STEP 4

Answer:

Answer Area

- Create the workflow
- Add the protection group
- Create the action(s)
- Create the policy

- Create the policy
- Create the workflow
- Add the protection group
- Create the action(s)

Explanation:

Answer Area

- Create the workflow
- Add the protection group
- Create the action(s)
- Create the policy

- Create the policy
- Create the workflow
- Add the protection group
- Create the action(s)

References:

