

# **Red Hat**

## **EX318 Exam**

**Red Hat Certified Specialist in Virtualization**

**Questions & Answers**

**Demo**

# Version: 4.0

---

## Question: 1

---

Task 1

Install RHVM

---

**Answer: See the steps below for Solution.**

---

Explanation:

```
curl http://materials.example.com/rhvm.repo -o /etc/yum.repos.d/rhvm.repo
yum install -y rhevm
engine-setup
systemctl status ovirt-engine firefox
https://rhvm.lab.example.com
```

---

## Question: 2

---

Task 2

Use nfs to create and export ISO, Data, and Export storage domains with utility

---

**Answer: See the steps below for Solution.**

---

Explanation:

```
vi /etc/exports
/exports/data *(rw)
/exports/iso *(rw)
/exports/export *(rw)
exportfs -rv chown
36:36 /mnt/*
```

---

**Question: 3**

---

## Task 3

Create a data center named "data0" with shared storage

Create a cluster named "cluster0" with a CPU architecture of x86\_64 and a CPU type of xxx

---

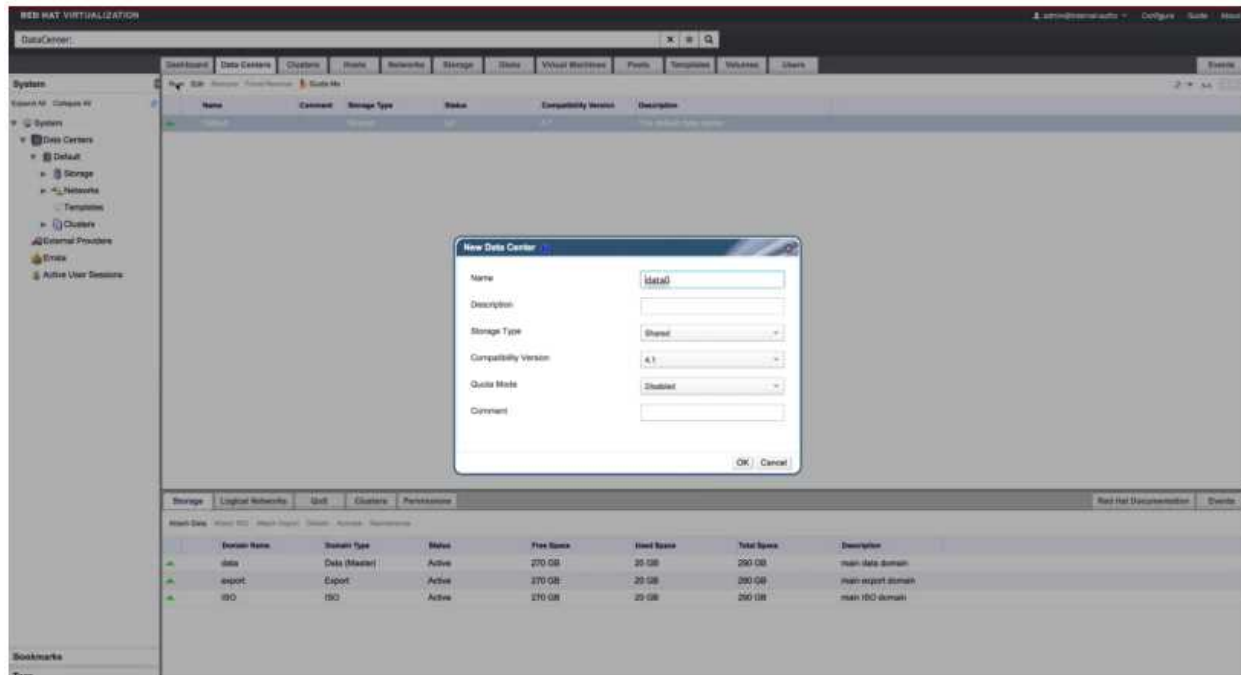
**Answer: See the steps below for Solution.**

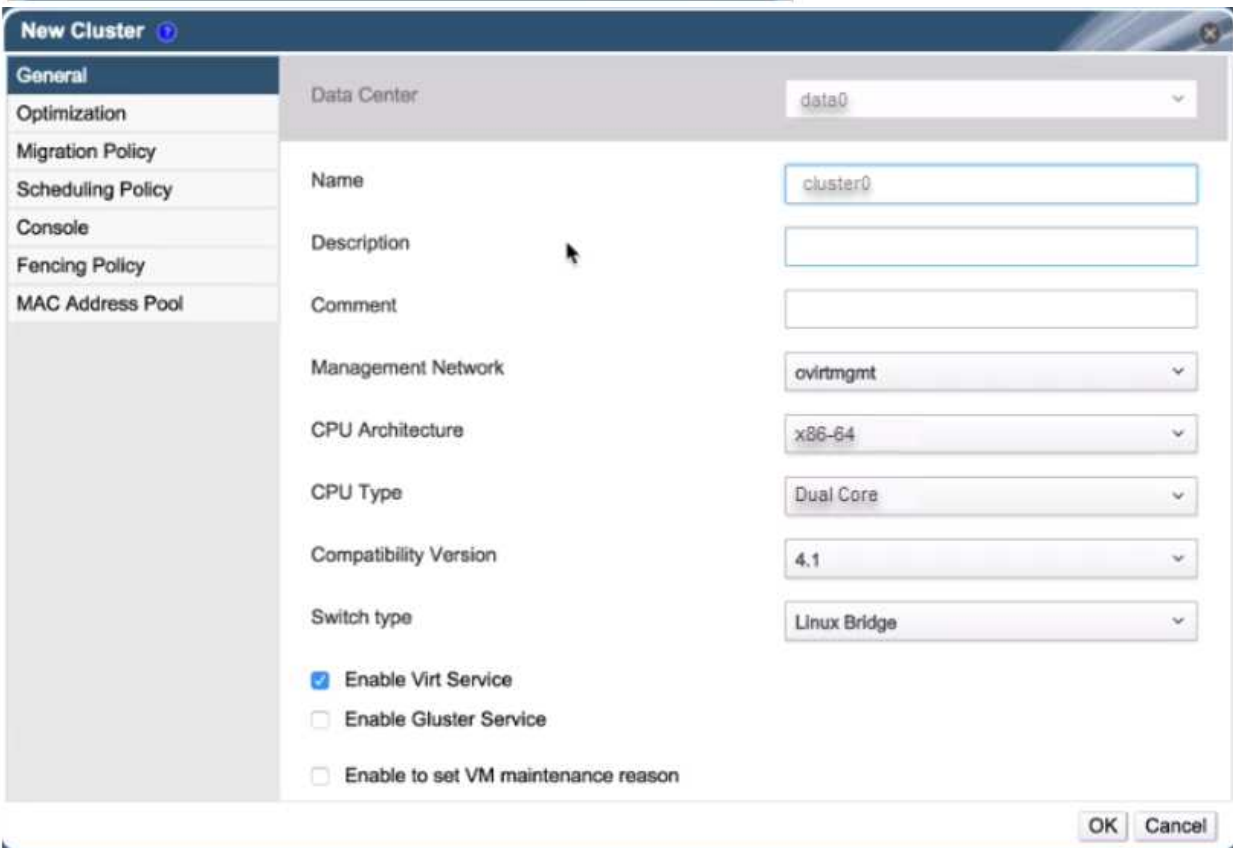
---

Explanation:

System -> Data Centers -> New

Name: data0





Question: 4

## Task 4

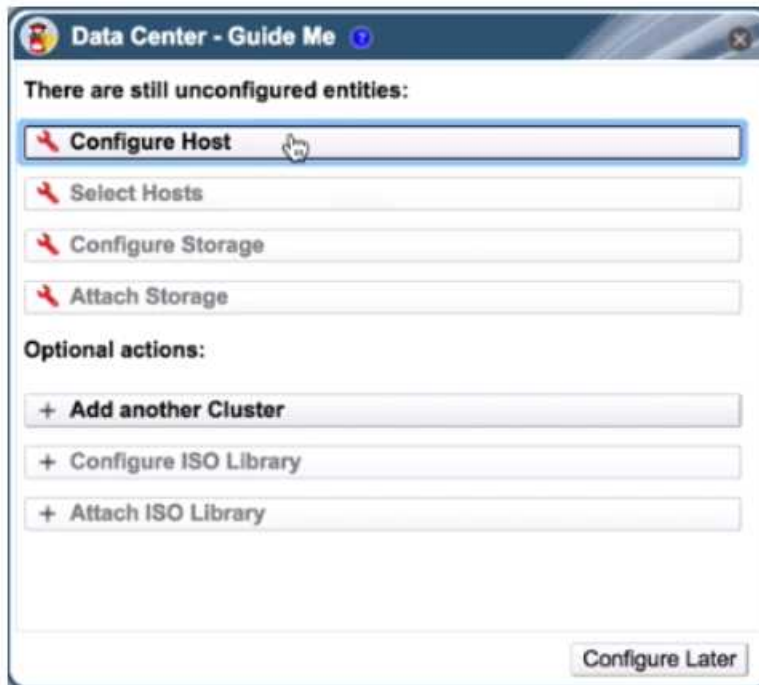
Add RHVH hosts “servera.lab.example.com” and “serverc.lab.example.com” into cluster “cluster0”

---

**Answer: See the steps below for Solution.**

---

Explanation:  
Steps in Exhibits below



**New Host**

**General**

Power Management

SPM

Console

Network Provider

Kernel

Affinity Labels

Host Cluster: cluster0

Data Center: data0

Use Foreman/Satellite

Name: servera.lab.example.com

Comment:

Address:

SSH Port: 22

**Authentication**

User Name: root

Password

SSH Public Key

[Advanced Parameters](#)

OK Cancel

**New Host**

**General**

Power Management

SPM

Console

Network Provider

Kernel

Affinity Labels

Host Cluster: cluster0

Data Center: data0

Use Foreman/Satellite

Name: serverc.lab.example.com

Comment:

Address:

SSH Port: 22

**Authentication**

User Name: root

Password

SSH Public Key

[Advanced Parameters](#)

OK Cancel

**Question: 5**

Task 5

Mount three storage domains (from Task 2)  
Note: The nfs-server service may not be started

---

**Answer: See the steps below for Solution.**

---

Explanation:  
Steps in Exhibits below

System -> Storage -> New Domain

