

HP

Exam HPE0-Y53

Building HPE SDN and FlexNetwork Solutions

Verson: Demo

[Total Questions: 10]

Question No : 1

Refer to Exhibits below:

Exhibit 1

```
<Switch> display openflow instance 1 flow-table
Instance 1 flow table information:
Table 0 information:
Table type: Extensibility, flow entry count: 6, total flow
entry count: 5

MissRule flow entry information:
cookie: 0xffff000000000000, priority: 0, hard time: 0, idle
time: 0, flags: flow_send_rem, byte count: --, packet count: 4435
Match information: any
Instruction information:
Write actions:
  Output interface: Normal

Flow entry 1 information:
cookie: 0xabab014e29d5834a, priority: 60000, hard time: 0, idle time: 0, flags: none, byte count: -
-, packet count: 24
Match information:
  Ethernet type: bddp
Instruction information:
Apply actions:
  Output interface: Controller, send length: 65509 bytes

Flow entry 2 information:
cookie: 0xabab014e29d5b83a, priority: 31000, hard time: 0, idle time: 0, flags: none, byte count: --
, packet count: 100
Match information:
  Ethernet type: arp
Instruction information:
Apply actions:
  Output interface: Controller, send length: 65509 bytes
Write actions:
  Output interface: Normal

Flow entry 3 information:
cookie: 0xabab014e29daab1a, priority: 31500, hard time: 0, idle time: 0, flags: none, byte count: --
, packet count: 1200
Match information:
  Ethernet type: 0x0800
  IP protocol: 17
  UDP source port: 68, mask: 0xffff
  UDP destination port: 67, mask: 0xffff
Instruction information:
Apply actions:
  Output interface: Controller, send length: 65509 bytes
Write actions:
  Output interface: Normal

Flow entry 4 information:
cookie: 0xabab014e29d5833b, priority: 31500, hard time: 0, idle time: 0, flags: none, byte count: --
, packet count: 1208
Match information:
  Ethernet type: 0x0800
  IP protocol: 17
  UDP source port: 67, mask: 0xffff
  UDP destination port: 68, mask: 0xffff
Instruction information:
Apply actions:
  Output interface: Controller, send length: 65509 bytes
Write actions:
  Output interface: Normal
```

Exhibit 2

```

<Switch> display openflow instance
Instance 1 information:
Configuration information:
  Description : --
  Active status : Active
  Inactive configuration:
    None
Active configuration:
  Classification: VLAN, total VLANs(1)
    20
In-band management VLAN, total VLANs(0)
  Empty VLAN
Connect mode: Multiple
MAC address learning: Enabled
Flow table:
  Table ID(type): 0(Extensibility), count: 5
  Flow-entry max-limit: 65535
  Datapath ID: 0x0001784859392f96
Port information:
  Ten-GigabitEthernet1/0/2
  Bridge-Aggregation1
Active channel information:
  Controller 1 IP address: 192.168.56.11 port: 6633

```

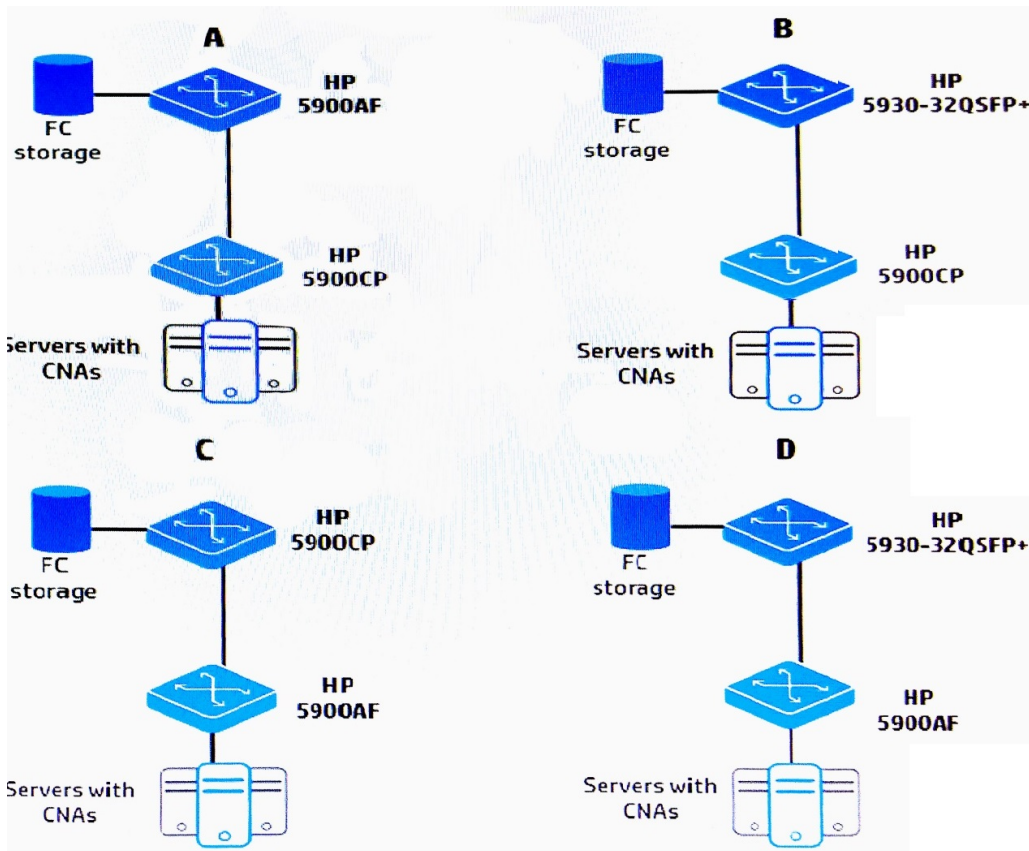
A network administrator has setup an HP VAN SDN Controller to operate in hybrid mode. The administrator wants to confirm that the controller has properly configured an HP Comware switch to be controlled by it in hybrid mode. Which output in the exhibit indicates that the controller is using hybrid mode.

- A. Active configuration
- B. MissRule flow entry information
- C. Flow entry 1 information
- D. Flow table

Answer: B

Question No : 2

Refer to Exhibit:



Which design in the exhibit shows valid choices for HP switches?

- A. A
- B. B
- C. C
- D. D

Answer: B

Question No : 3 DRAG DROP

Evaluate each scenario for multi-tenant isolation, and match the scenario to the technology that best meets its needs.

Scenario	Technology
MAC table isolation	<input type="text" value="SPBM"/>
Routing table isolation	<input type="text" value="MDC"/>
Hardware isolation	<input type="text" value="MCE"/>

Answer:

<u>Scenario</u>		<u>Technology</u>
MAC table isolation	SPBM	SPBM
Routing table isolation	MCE	MDC
Hardware isolation	MDC	MCE

Question No : 4

A company has an HP VAN SDN Controller with Network Protector solution. The network administrator wants to prevent devices in the student VLAN from sending traffic with a high QoS value. Instead, all traffic in the student VLAN should be reassigned for normal forwarding.

Which Network Protector component should the administrator use to enforce this policy?

- A. a priority whitelist
- B. a custom whitelist
- C. a custom greylist
- D. an ACL

Answer: A

Question No : 5

Which requirement does EVI selective flooding help administrators fulfill?

- A. the need to conserve bandwidth or inter-data center links by minimizing the flooding of ARP and other common broadcasts
- B. the need to control which tenants are allowed to communicate between specific data centers
- C. the need to minimize the impact of EVI on routing switch performance by decreasing EVI protocol traffic
- D. the need to transmit multicast traffic between data centers for applications that do not use IGMP to register

Answer: D

Question No : 6

A company has a VoIP solution that is managed by a third party. The company wants to isolate the VoIP traffic at the IP level so that:

- VoIP devices have their own IP addressing.
- The third-party provider can only access the VoIP network.

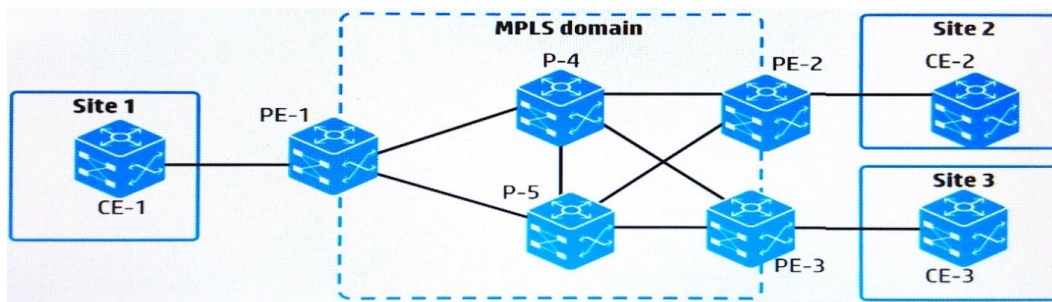
The company does not want to isolate the traffic at Layer 1 or 2. Which approach should the company take to accomplish this goal?

- A. Implement MDC and create an MDC for the VoIP network.
- B. Implement EVI and create a unique network ID for the VoIP network.
- C. Implement SPBM and assign the VoIP traffic to its own I-SID.
- D. Implement MCE and create a VPN instance for the VoIP network.

Answer: D

Question No : 7

Refer to Exhibit:



A network administrator has set up MPLS on the switches shown in the exhibit. The administrator wants to verify that PE-1 can use MPLS to forward traffic to Site 3, as well as see the labels used along the path. Which step should the administrator take to obtain this information?

- A. Run a tracer to an IP address at Site 3 using the MPLS option.
- B. Use the display command to view MPLS LDP neighbors.
- C. Debug LDP and ping an IP address at Site 3.

D. Use the `display command` to view MPLS Label Forwarding Information Base (LFIB).

Answer: A

Question No : 8

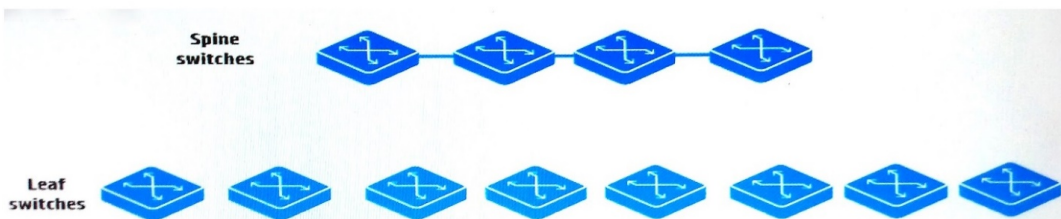
A customer requires greater visibility and insight into traffic flowing between virtual machines (VMs) on the same ESXi host. Which HP product meets these needs?

- A. HP 5900v switch
- B. HP 7900 switch
- C. HP 12500 switch
- D. HP 12900 switch

Answer: A

Question No : 9

Refer to Exhibit:



A network administrator wants to create a leaf and spine topology. How should the administrator connect the switches for the best latency and load-balancing?

- A. Connect each leaf switch to each spine switch, and run a protocol such as EVI.
- B. Connect each leaf switch to half of the spine switches, and run a protocol such as TRILL.
- C. Connect each leaf switch to each spine switch, and run a protocol such as TRILL.
- D. Connect each leaf switch to half of the spine switches, and run a protocol such as EVI.

Answer: C

Question No : 10

Which type of authentication system is recommended for most HP VAN SDN Controller installations?

- A. remote Keying server
- B. local RADIUS server
- C. local Keystone server
- D. remote RADIUS server

Answer: C