

Veritas

VCS-324 Exam

Administration of Veritas Enterprise Vault 12.3

Questions & Answers Demo

Version: 6.0

Question: 1

An administrator notices that nothing is being archived during scheduled archiving. However, users are able to archive manually from Outlook.

What should the administrator check first to ensure items are archived during scheduled archiving?

- A. verify the Provisioning task is running
- B. verify the Mailbox Archiving task is running
- C. verify the Mailbox Archiving task has Report mode unchecked
- D. verify "Initially Suspend Archiving" is unchecked in the provisioning group

Answer: C

Question: 2

A Veritas Enterprise Vault 12.3 administrator wants to view how often items are read or retrieved after configuring Enterprise Vault Auditing.

Which two Enterprise Vault Operation Reports require Auditing to be enabled? (Select two.)

- A. Archive Quota Usage
- B. Items Archival Rate
- C. Archived Items Access
- D. Exchange Server Journal Mailbox Archiving Trends
- E. Archived Items Access Trends

Answer: C E

Question: 3

Where is the Enterprise Vault system mailbox created?

- A. on active members of a Database Availability Group only
- B. on the Global Catalog server in the domain
- C. on each target Exchange server in the domain
- D. on the first Exchange server in the domain

Answer: C

Question: 4

An administrator needs to remove an Index Server from an Index Server Group and place it in another group.

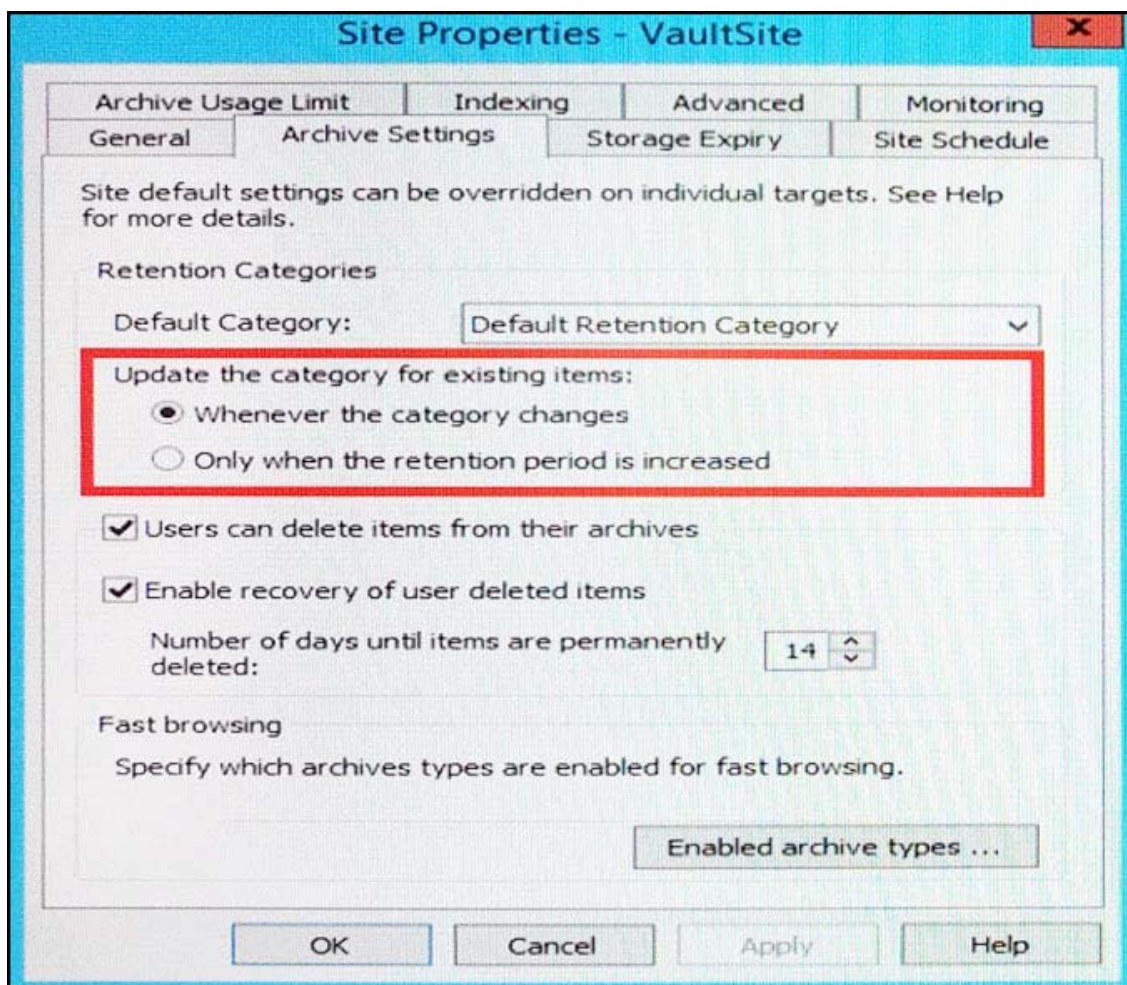
When can this process be completed?

- A. during the processing time of the Index Administration task
- B. before archived items have been indexed
- C. when the Indexing Service is stopped
- D. after indexes have been put into Backup mode

Answer: B

Question: 5

Refer to the Exhibit.



An administrator needs to remove an Index Server from an Index Server Group and place it in another group.

What does the Site Setting shown in the red box apply to?

- A. restored and re-archived mailbox items
- B. mailbox shortcuts

- C. archives moved using the Move Archive wizard
- D. Storage Queue items

Answer: B

Question: 6

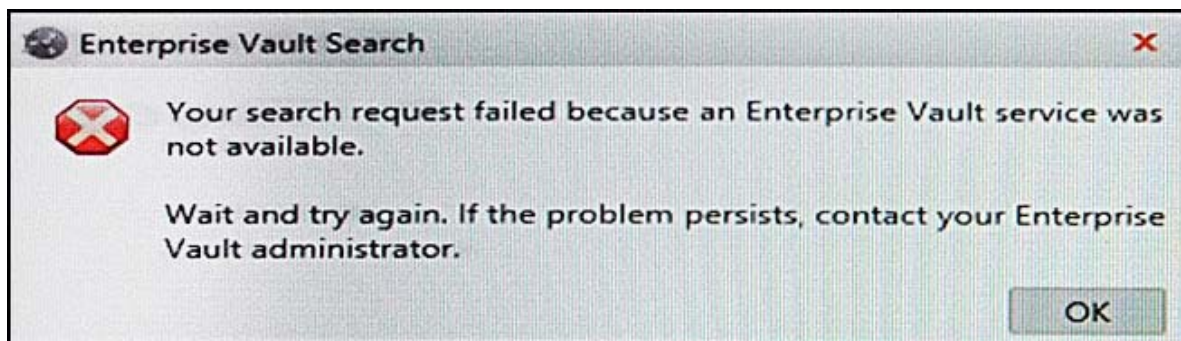
What are the two supported Windows Server and Veritas Enterprise Vault 12.3 server combinations? (Select two.)

- A. Windows Server 2003
- B. Windows Server 2008
- C. Windows Server 2008 R2
- D. Windows Server 2012
- E. Windows Server 2012

Answer: D E

Question: 7

A user is attempting to use Enterprise Vault Search but receives the following error message:



Which Enterprise Vault service needs to be started?

- A. Task Controller Service
- B. Indexing Service
- C. Storage Service
- D. Storage Service

Answer: A
